



**Municipality of Clarington  
Emergency & Fire Services**

**Community Risk Assessment  
2021**

Contents

Introduction ..... 3

1. Geographic Profile ..... 4

2. Building Stock Profile ..... 7

3. Critical Infrastructure Profile ..... 12

4. Demographic Profile ..... 15

5. Hazard Profile ..... 17

6. Public Safety Response Profile ..... 18

7. Community Services Profile ..... 19

8. Economic Profile ..... 20

9. Past Fire Loss and Event History Profile ..... 21

Conclusions/Recommendations ..... 37

Appendix A: Building Stock/Occupancy details ..... 41

## Introduction

The Fire Protection and Prevention Act, 1997 and subsequent Regulation 378/18 requires each Ontario municipality to complete and review a Community Risk Assessment not later than 01 July 2024.

The purpose of a completed and approved Community Risk Assessment (CRA) is to permit the municipality, through municipal legislation passed by Council, to make informed decisions as to the type and level of fire protection services (core services) they will provide, through the efforts of Clarington Emergency and Fire Services (CEFS) based on the identified risks.

The Regulation identifies nine mandatory profiles to be assessed by the municipality during the completion of an CRA, including:

- 1) Geographic
- 2) Building Stock
- 3) Critical Infrastructure
- 4) Demographics
- 5) Hazards
- 6) Public Safety Response
- 7) Community Services
- 8) Economic
- 9) Past Fire Loss and Event History

The Municipality of Clarington has chosen to undertake the completion of a CRA in 2021 to not only meet the requirements of the regulation but to also use the approved CRA as a resource to assist in the development of a Master Fire Plan.

As outlined in Ontario Regulation 378/18, this CRA is a living document and should be updated as the needs and circumstances of the Municipality of Clarington change. It must be reviewed annually by the municipality and a CRA shall be completed every five years.

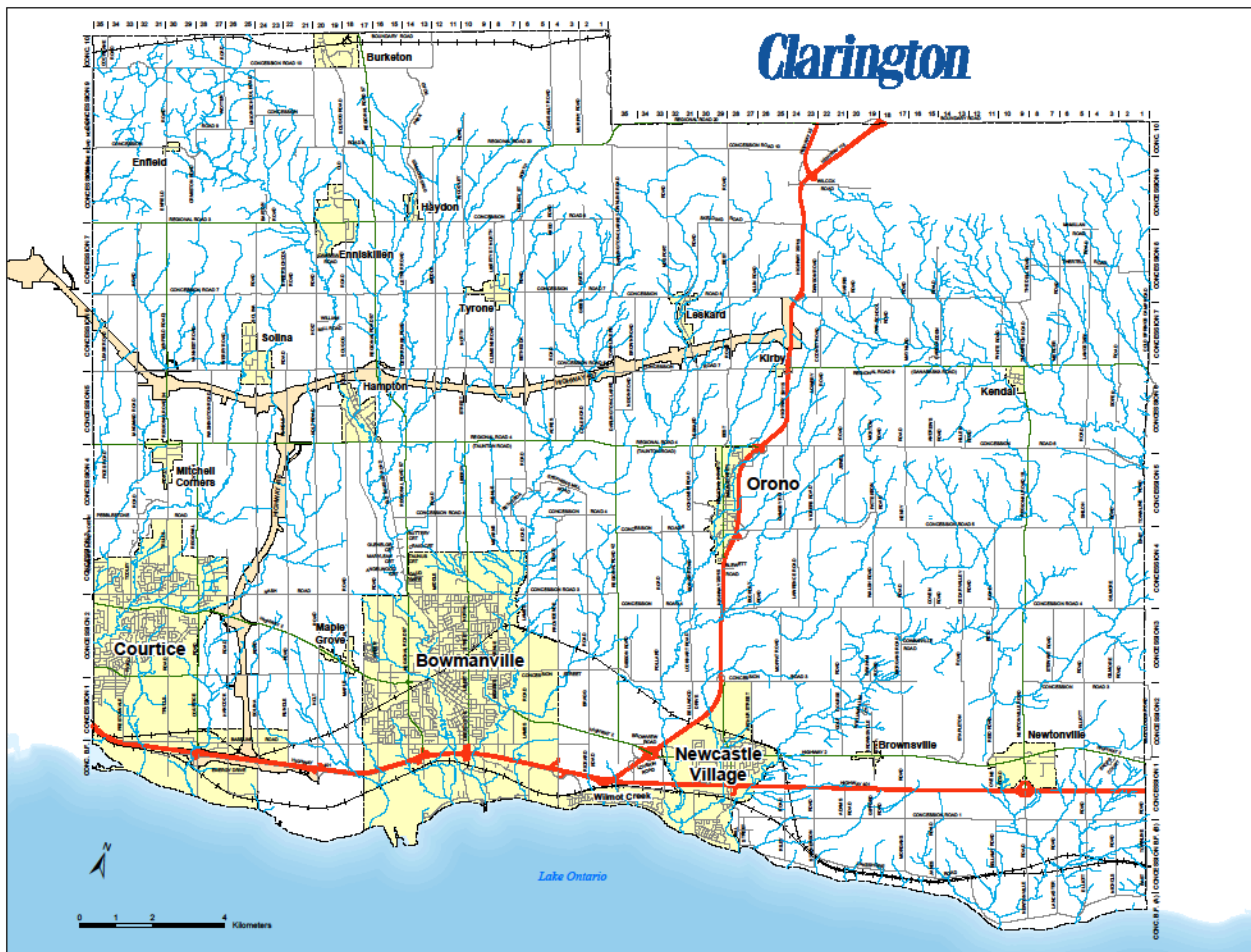
## Risk

Risk is defined as a measure of the probability and consequence of an adverse effect to health, property, organization, environment, or community as the result of an event, activity, or operation.

## 1. Geographic Profile

Geographic profile refers to the physical features of Clarington, including natural features and placement of infrastructure such as railways and highways. As appropriate, past and future growth and development may be included. Natural features such as Lake Ontario, the Ganaraska Forest and other aspects such as creeks, streams and unique landscape and wildland-urban interfaces should be assessed.

The unique interconnectedness of human made, and natural features found within Clarington may present inherent risks that should be taken into account depending on the level of fire protection desired and with regard to emergency vehicle access, evacuation and emergency services response times.



Clarington is on the eastern boundary of the Greater Toronto Area in Durham Region.

The Municipality of Clarington was created in 1974 following the approval of the Regional Municipality of Durham Act by the amalgamation of the former Town of Bowmanville, the Village of Newcastle and the Townships of Clarke and Darlington.

With a population of 105,000, Clarington covers an area of approximately 612 square kilometers. There are 4 major urban centers, Bowmanville, Courtice, Newcastle and Orono and 15 hamlets. Recent studies by, the Region of Durham and the Municipality of Clarington have indicated, Clarington is expected to see significant growth in the coming years. The predicted growth will place additional demand on municipal services including fire and other emergency services.

### **Lake Ontario**

Thirty kilometers of the southern border of Clarington is situated along Lake Ontario. The area represents a significant draw to the population for both living and recreational needs. Clarington has marinas, boat launching facilities as well as parks, recreational trails and beaches. Developers have planned and building projects are scheduled in the area of Lake Ontario. Seasonal flooding along the shores of Lake Ontario in the Municipality of Clarington is a common event and impacts municipal resources.

With the influx of population anticipated over the next decade, community resources need to be examined to ensure a welcoming and safe environment

### **Railway Lines**

Two railway lines run through the Municipality of Clarington. Canadian National and Canadian Pacific have tracks used by passenger and freight trains. A third set of rails will soon be in place as Metrolinx develops two additional terminals in Clarington

Clarington`s location within the GTA enables commuters to travel from and transverse through the municipality of Clarington on the above noted trains. Should one or more of these trains be involved in an emergency incident, the risks are significant and should be considered.

In addition to the passenger traffic, large amounts of hazardous materials are routed though the community. While the risk may be from the same transportation source, a response to either would require the use of different resources.

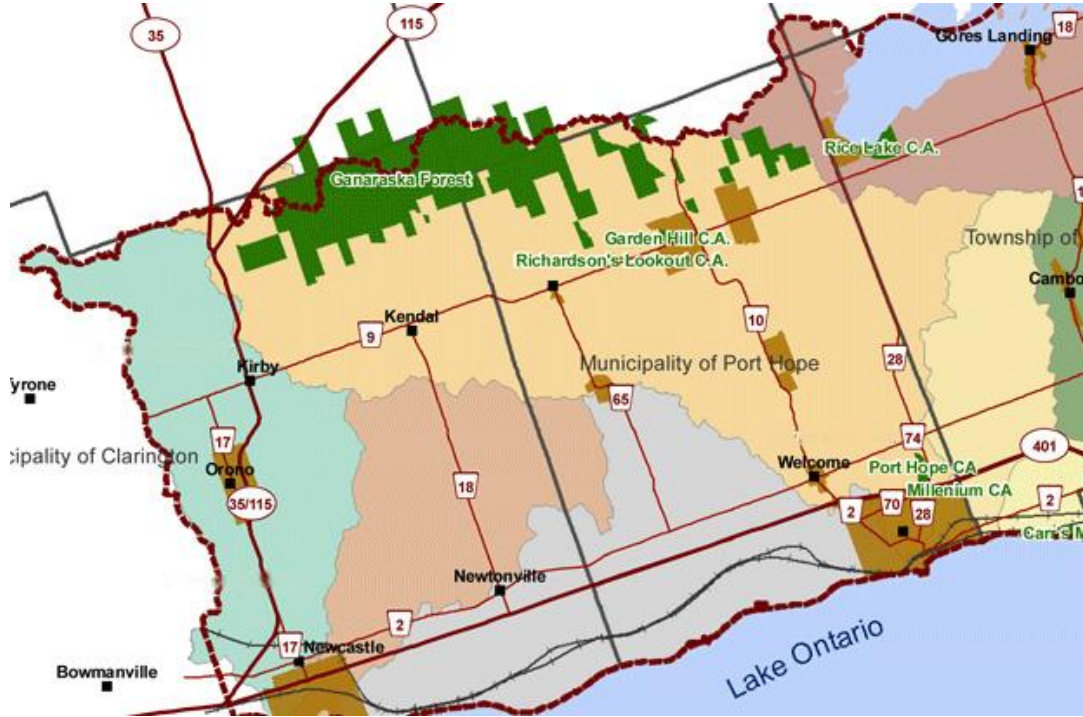
Slow moving or stopped rail traffic may also affect response time for emergency vehicles at level crossings.

### **Highways**

Four high volume major highways traverse the Municipality of Clarington. Highway 401 with a volume of 85,600 vehicles per day and Highway 407 averaging 134,000 average day trips (measured at Stevenson Road in Oshawa). Highways 418 and the 35/115 corridor also contribute to the risk of motor vehicle collisions including emergency situations that could involve the presence of hazardous materials being transported overland.

Any shutdown of these major transportation routes will negatively impact commerce, not only in the municipality, but also across Ontario.

The largest urban forest in Ontario is mostly located within Clarington. Approximately 10,000 acres of this 11,000-acre forest is situated in the northern part of the municipality. This forest is visited by thousands of people each year. The regular influx of visitors and their activities in conjunction with the natural landscape pose a risk to be addressed.



**Ganaraska Forest -10,000 acres in Clarington**

**Summary of Clarington Geographic Profile Risks**

Geographic Feature	Potential Impact on the Delivery of Fire Protection Services
Lake Ontario	Hazards and concerns identified with having a large body of water as the southern border of the municipality, presents several risks, such as search and rescue, marine fires and flooding to address.
Railway Tracks	Large amounts of people and goods are transported through the municipality by rail. Risks associated with train derailments due to collisions and the dangers associated with large volumes of hazardous materials require consideration.
Highways 401, 35/115, 407, 418	Highway transportation routes intersecting and traversing Clarington create significant potential risk due to motor vehicle collisions and associated dangers due to hazardous materials.

<b>Geographic Feature</b>	<b>Potential Impact on the Delivery of Fire Protection Services</b>
Ganaraska Forest	Having the largest urban forest in Ontario requires the community to address visitor safety and environment concerns such as forest fires. There is a municipal partnership associated with the Ganaraska Forest. Area Municipalities meet with staff from the Ganaraska Forest to provide updates on activities in the forest such as accidents, prescribed burns, logging etc. CEFS has hosted courses to assist fire services in forestry firefighting. MNRF is consulted and provides CEFS with annual costs for assistance using water bombers, helicopters, staff etc.

## 2. Building Stock Profile

The rich history of the area results in a wide distribution and mixture of various types of buildings. Vintage buildings were often built without the safety standards that existed in later years, as building safety standards evolved throughout the last century.

Many buildings built without the advantage of building and fire codes continue to be utilized as single-family residential housing. Most of these structures have had upgrades including plumbing, heating and electrical and would meet the safety requirements of today.

New construction is built to modern building codes and when maintained, represent some of the safest structures in the municipality.

Human behaviours and associated activities and processes conducted within the existing structures may also affect fire risk.

### Building Stock Profile

#### Residential Occupancies in Clarington

<b>Occupancies</b>	<b>Total</b>
Single-detached house	25,950
Apartment in building that has 5 or more stories	265
Semi-detached house	1,035
Row house	2,740
Apartment or flat in duplex	905
Apartment in a building that has less than 5 stories	1,825
Other single-attached house	40
Movable dwelling	75
<b>TOTAL Occupied private dwellings</b>	<b>32,840</b>

Source: Statistics Canada – 2016 Census

## Residential

All recent fire deaths and injuries in Clarington have occurred in single family residential occupancies.

As residential occupancies have the highest risk of fire, this means that public fire and life safety education activities should primarily focus on residential fire prevention and life safety.

Currently CEFS attends various public events, distributing and sharing fire safety material and information. Tours of the fire stations and visits by CEFS staff in the community are available upon request. Station tours include a fire safety presentation whenever possible.

Various public events are attended with a fire truck and/or table display with literature and staff to assist with fire safety queries.

Alarmed for Life is a residential smoke and carbon monoxide alarm program that Clarington Emergency and Fire Services has been conducting since 1991. It is intended that all residential occupancies in the urban areas of Clarington be visited by duty crews at least once over a period of 3 to 5 years to ensure compliance, to the Ontario Fire Code, regarding residential working smoke and carbon monoxide alarms and to support homeowners with home escape planning. Additionally, CEFS fire prevention staff are made aware of and deal with further fire safety issues raised by fire crews and/or homeowners.

Two thirds of the residents in high rise buildings in Clarington are mature residents. These occupants are within an “at risk” demographic and are encouraged by CEFS to be aware and participate in safe practices and develop escape plans. The anticipated growth in the Municipality should be matched with an appropriate level of public education and fire prevention activity.

According to the 2020 Watson and Associates Economists Ltd. development charges report for Clarington, approximately 13,700 dwelling units and an unspecified number of associated mercantile/personal services, industrial and other buildings will be added to the building stock profile over the next decade. This growth includes a projected concomitant population growth of approximately 40,000 residents.

### All Clarington Buildings

The chart below shows an estimated inventory of the number of buildings presently in the Municipality of Clarington.

**Buildings in Clarington**

<b>Building Type</b>	<b># of Bldgs</b>
High Rise Residential	3
Low Rise Residential	46
Single/Town Residential	29725
Farms	672
Seasonal / Cottage	69



<b>Building Type</b>	<b># of Bldgs</b>
Seniors/Retirement	7
Industrial	108
Gas Stations/Auto Repair	45
Restaurants	129
Nursing Home/Hospital	5
Assembly	28
Hotels/Motels	8
Schools	40
Offices	74
Group Homes	8
Day Care Centers	31
Commercial	346
Churches/Worship	43

Source: Municipality of Clarington

### **High Hazard Industrial Occupancies:**

Ten F1 or High hazard occupancies are located in Clarington and are inspected on an annual basis. these occupancies include auto body repair facilities. These facilities pose a higher-than-average risk of fire as six of these occupancies include the operation of paint spray booths. Clarington has not experienced any fires related to paint spray booths.

### **Other High Hazard Occupancies:**

A commercial enterprise located at 11 Caristrap Street is considered high hazard because it processes flammable material. The facility is inspected annually and to-date there have been no fires at this location.

A company at 322 Bennett Road collects hazardous materials and applies processes to neutralize the hazardous components to render the material safe. This site is considered high risk as the volume of material on site at any one time may not be known. This site has suffered fires in 2006 and 2018.

A large propane distribution 40 Port Darlington Road is considered high risk due to the storage and transfer of propane. There was a large propane fire at this location in November 2004.

### **Vulnerable Occupancies**

There are 13 identified vulnerable occupancies, such as hospitals and Long-Term Care facilities in Clarington. These facilities inherently have a high-risk potential as the occupants may have difficulty evacuating the building during a fire or other emergency.

All vulnerable occupancies are inspected annually to ensure they comply with the Ontario Fire Code. As required by the Fire Code all vulnerable occupancies are sprinklered.

**Vulnerable Occupancies**

<b>Facility Name</b>	<b>Location</b>
Bowmanville Creek	105 Queen Street
Christian Horizons	2802 Highway 2
Community Living	4794 Old Scugog Rd
Community Living	6758 Enfield Rd
Community Living	706 Holt Rd
Fosterbrooke Long Term Care	330 King Avenue West
Glenhill Strathaven Long Term Care	264 King Street East
Harmony Estate	3589 Tooley Rd
Lakeridge Health Bowmanville	47 Liberty Street South
Seasons Retirement	65 Clarington Blvd
The Participation House	258 West Scugog Lane
White Cliffe Terrace	1460 Highway 2

<b>Fire Risk</b>					
<b>Occupancy Classification</b>		<b>Issues/Concerns</b>	<b>Probability</b>	<b>Consequence</b>	<b>Risk Level</b>
<b>Group A</b>	Assembly	Number of occupants and evacuation	Unlikely	Major	Moderate
<b>Group B</b>	Detention	Occupants confined	Rare	Moderate	Low Risk
	Care & Treatment	Occupants' ability to evacuate	Unlikely	Major	Moderate
<b>Group C</b>	Single Family	Majority of fire deaths occur in this occupancy	Almost Certain	Moderate	High
	Multi-Unit	Majority of fire deaths occur in this occupancy	Almost Certain	Moderate	High
	Hotel/Motel	Unfamiliar with exits	Possible	Moderate	Moderate
	Mobile Homes	Fast fire extension	Rare	Moderate	Low Risk
	Other	N/A	N/A	N/A	N/A
<b>Group D &amp; E</b>	Service/ Mercantile	Age of buildings.	Likely	Moderate	Moderate
<b>Group F</b>	Industrial	Dangerous Processes	Likely	Moderate	Moderate
<b>Other</b>	Farms	Lack of firefighting water. Long response time	Almost Certain	Minor	Moderate

## **Ontario Power Generation Darlington Nuclear**

Clarington works closely with Ontario Power Generation (OPG) Darlington Nuclear to ensure fire risks are managed and fire hazards eliminated. The facility falls under the jurisdiction of the National Fire Code but the Ontario Fire Code is also reviewed with the more stringent code complied with. OPG is the largest employer in Clarington with 2,500 employees.

The predominant hazard at OPG is associated with a radiation release/exposure, fire although a high hazard is secondary.



Darlington Nuclear Generation Station (OPG)

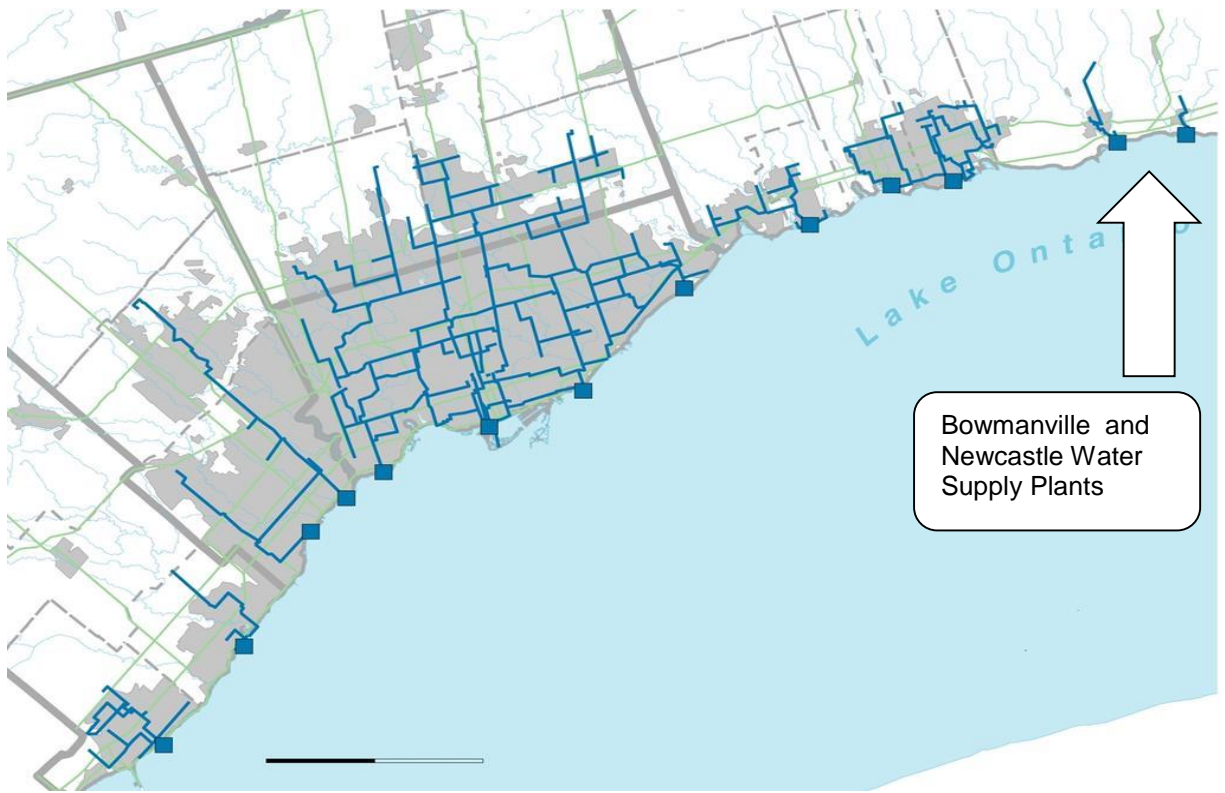
### **3. Critical Infrastructure Profile**

Critical Infrastructure profile refers to the facilities or services that contribute to the interconnected networks, services, and systems that meet vital human needs, sustain the economy, and protect public safety and security (examples include electricity production and distribution, water distribution, telecommunications, hospitals, and airports).

#### **Water distribution system**

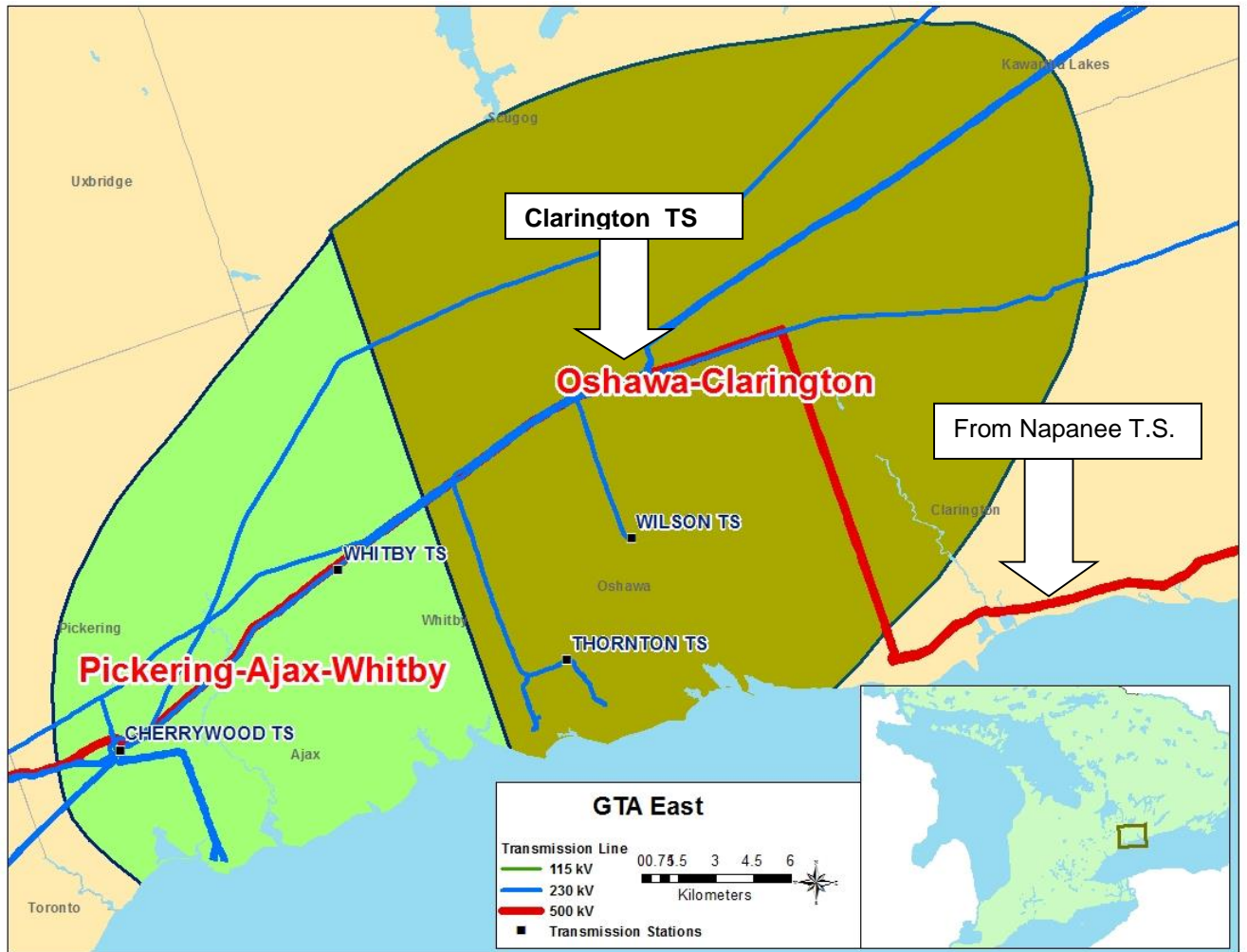
Water for firefighting is supplied by the Region of Durham by pumping stations. One is located in Oshawa that supplies Courtice, one in Bowmanville and one is located in Newcastle. Orono uses its own water from underground sources for their fire hydrants.

Clarington has tanker trucks to transport firefighting water to fires in a rural area without fire hydrants or should an urban area fire hydrant system become compromised.



Clarington Water Distribution

## Electrical Supply



A 500/230 KV hydro transformer station is located in Enfield. Clarington TS is the principal power supply source for the east GTA region load. Any damage to this transformer station may cause power outages if the remaining transformer stations cannot keep up with added demand.

The Clarington transformer station covers the electricity needs of the majority of Clarington. The remaining points of Clarington are served by the Napanee transformer station as seen by the red line on the above map.

Although fires may be rare at transformer facilities in Clarington, the risk posed is substantial.

## Hospital

Bowmanville Memorial Hospital is a partner in the Lakeridge Health group, Lakeridge Health operates five hospitals and other facilities in the Durham region. Systems are in place to redistribute patients, should this site be unable to accept patients or the site requires evacuation.



<b>Clarington Critical Infrastructure Profile Risks</b>	
<b>Identified Critical Infrastructure</b>	<b>Issues / Concerns</b>
Viridian / Hydro One Electricity Distribution	Hydro distribution system is not only critical to the delivery of emergency services, but also to the ongoing requirements for commerce throughout the GTA.
Bowmanville Memorial Hospital	Consideration is required should an emergency occur on site or the hospital is compromised because of a remote emergency.
Telecommunications	Communication in the event of an emergency is important to both the public and to emergency service providers.
Durham Region Works Water Department	Stable water supply for the safe secure drinking water for the residents and firefighting.

## 4. Demographic Profile

Municipal services, including fire protection, should be tailored to the community being served with the understanding that a municipality may have multiple communities within its borders. CEFS needs to examine and understand the demographics of the community to provide appropriate services.

Demographic profile refers to the composition of the community considering such factors as population size and dispersion, age, gender, cultural background, level of education, socio-economic make-up, and transient population.

Awareness and understanding of unique needs and circumstances gained from the various demographics in Clarington helps ensure fire protection, in accordance with the Three Lines of Defence, is delivered in the most relevant and meaningful ways with the greatest positive impact.

Awareness of the characteristics of the population in the community assists the fire department to determine if specific segments of the population are at high-risk of fire instances or higher risk of fire related injury and to tailor public education and prevention/enforcement activities accordingly.

### Clarington Population 2016

<b>Ages of Population</b>	<b>Number</b>	<b>% of Population</b>	<b>Ontario Average</b>
0-14	17,155	18%	16%
15-65	62,245	68%	67%
65 and over	12,615	14%	17%
Total Population	92,015	100%	13,448,495

Source: Statistics Canada

The chart above shows the age group of children up to age 14 comprises 18% of Clarington's population. The larger percentage can be attributed to young families choosing to locate in Clarington because of the affordability of housing compared to the rest of the GTA.

Another population grouping accounts for the greatest number of fire fatalities in Clarington is seniors. The percentage of the population being age 65 and older in Clarington is approximately 14%. This has increased from 10% in an earlier Census. Our aging population requires additional public fire and life safety education and fire prevention efforts to ensure their safety. Indeed, the largest demographic segment known as "baby boomers" is aging and Clarington has a large planned exclusive adult community known as Wilmot Creek.

The public education activities of CEFS are concentrated on family fire safety to address the high percentage demographic of children and young families.

Family Safety Day is on the last Saturday in September at Fire Station 1. It is suited for families who can visit displays from safety agencies including Fire, Police and Emergency Medical Services and other community partners.

The latest Statistics Canada report indicates that 99.7% of Clarington residents speak English and/or French. Approximately 250 residents, or 0.3%, of residents speak neither English or French. Fire safety information continues to be made available in both official languages. Where English or French is not the first language spoken, fire safety information can be made available in several other languages as identified during interaction with the public or upon request.



According to the 2020 Watson and Associates Economists Ltd. development charges report for Clarington, a projected population growth of approximately 40,000 residents will occur by 2031 living in an additional 13,700 dwelling units.

## 5. Hazard Profile

<b>Hazard Profile Risks in Clarington</b>			
<b>Identified Hazard</b>	<b>Probability</b>	<b>Consequence</b>	<b>Assigned Risk Level</b>
Flood	Almost Certain	Minor	Moderate
Ice Storm	Possible	Moderate	Moderate
Radiation Leak OPG	Rare	Catastrophic	Moderate
Propane Explosion	Rare	Moderate	Low Risk
Fire Emergencies	Almost Certain	Moderate	High Risk

**Flood:** There is a history of flooding from Lake Ontario at Cedar Beach Crest Road. Clarington has a Flood Response Plan. The municipality has purchased a sand bagging machine and has a list of volunteers ready to sandbag. The Clarington works department is also available to assist with mitigating this risk.

**Ice Storm:** There is always a possibility of an ice storm occurring in the winter months. A significant concern is motor vehicle collisions and Carbon Monoxide (CO) poisoning if residents use fuel fired generators indoors if the household power is interrupted.

**Radiation Leak OPG:** During an emergency CEFS will support the Darlington Generating Station Industrial Fire Brigade and be guided by Emergency Management Ontario on appropriate actions. CEFS will not take part in the door-to-door evacuations. The Darlington Nuclear Generating Station is covered under the Provincial Nuclear Emergency Response Plan (PNERP) and is supported by the Durham Region Nuclear Emergency Plan. The PNERP requires that each designated municipality under the plan form a Nuclear Emergency Management Coordinating Committee. The Durham Region Emergency Management Coordinating Committee (DEMCC) will consider nuclear emergency planning and preparedness as part of its mandate and thus will meet the obligations of the Provincial plan.

**Propane Explosion:** Department Policy 6.307 Hazardous Materials is in place and CEFS will develop an additional Department policy to address propane explosions.

**Fire Emergencies:** CEFS has various Department policies in effect to address the prevention and response to fire emergencies.

## 6. Public Safety Response Profile

<b>Clarington Public Safety Response Profile Risks</b>			
<b>Identified Public Safety Response Agency</b>	<b>Types of Incidents they respond to</b>	<b>Their role at the incident</b>	<b>Issues / Concerns</b>
Durham Regional Police Service (DRPS)	Motor Vehicle Collision's (MVC) Fire emergencies Marine emergencies	Scene control Traffic control and assist CEFS with fire investigation Marine based search & rescue	Common inter-agency awareness and incident command training between fire and police services
Durham Region Emergency Medical Services (DREMS)	Medical emergencies MVC's Fire emergencies	Transport patients to hospital Provide pre-hospital medical care Standby and perform rehabilitation for firefighters at fire calls	Common inter-agency awareness, and incident command training between fire and DREMS
OPG Industrial Fire Brigade (IFB)	Fire and emergency incidents at Darlington Nuclear Generating Station (OPG)	OPG IFB establishes command and operational control to mitigate emergency incidents	Common inter-agency training (especially Incident Management System training) between OPG IFB and Clarington Emergency Fire Services (CEFS) as CEFS provides supporting role to the IFB at OPG
Ontario Volunteer Emergency Response Team (OVERT)	Search and Rescue	Assist in search and rescue incidents	Common inter-agency Incident Command System (ICS) training between OVERT and CEFS

Most emergency responses by CEFS are of a medical nature. CEFS firefighters receive intensive intermediate emergency medical response training when hired and participate in refresher courses twice a year.

Mock exercises and other cooperative training opportunities are held at and in conjunction with OPG Darlington Nuclear Generating Station on a regular basis throughout the year. This allows Clarington Emergency and Fire Services to train with the OPG Industrial Fire Brigade.

## 7. Community Services Profile

<b>Community Service Agencies</b>	<b>Types of assistance they provide</b>	<b>Issues/ Concerns</b>
Red Cross	Provide temporary shelter for displaced persons	Requires initial and maintenance of formal agreement. Provide awareness training for Red Cross and CEFS staff
Salvation Army	Provide refreshments at emergency scenes for CEFS and other emergency services staff	None – requires ongoing relationship
Durham Social Services	Provide assistance and other supports for displaced persons	Requires awareness training for CEFS staff
Lions Club	Financial assistance for public education projects	None – requires ongoing relationship
Rotary Club	Financial assistance for public education	None – requires ongoing relationship
2-1-1 Ontario	Helpline and online database of Ontario's community and social services	Requires maintenance of formal agreement and database involvement by Municipality of Clarington. Provide awareness training for CEFS staff
Enbridge Gas	Provide donations of smoke and carbon monoxide alarms for residential dwelling units	None. Requires program application to Enbridge for consideration of donation

At fire and emergency scenes CEFS depends on the Salvation Army to provide refreshments to the firefighters.

The Red Cross and Durham Region social services provide temporary shelter and other supports and information to persons displaced from their home due to fire.

Community clubs and organizations such as the Lions and Rotary Clubs have partnered with CEFS to provide funds to purchase public education materials and smoke alarms.

Enbridge Gas has donated 500 CO/Smoke alarms to CEFS for free distribution in the community.

## 8. Economic Profile

<b>Clarington Economic Profile Risks</b>				
<b>Identified Occupancy</b>	<b>Key Risk</b>	<b>Probability</b>	<b>Consequence</b>	<b>Assigned Risk Level</b>
Darlington Nuclear	Nuclear	Rare	Catastrophic	Moderate Risk
Municipality of Clarington	Fire	Possible	Moderate	Moderate
Bowmanville Hospital	Fire	Possible	Major	Moderate Risk
Algoma Orchards	Fire	Low	Minor	Minor Risk
St Mary's Cement	Fire	Possible	Minor	Moderate Risk

The largest employer in Clarington is Ontario Power Generation's (OPG) Darlington Nuclear Generating Station. OPG has 2,500 employees and has plans to move its head office from Toronto to Clarington in the near future. This could add another 2000 staff to the OPG Clarington campus area.

An event at OPG Darlington may not necessarily pose a nuclear radiation issue. Any closure of the facility would have a significant negative effect on the local economy of Clarington. Small fires at the facility that have occurred were quickly extinguished and put under control.

The second largest employer in Clarington is the Municipality of Clarington with 700 employees. Most employees work at the municipal offices while the remainder are spread out across the municipality. Business continuity plans are a top priority for the Municipality of Clarington.

The Bowmanville-Lakeridge Health hospital has approximately 370 employees. Any disruption here would force patients to attend or potentially be transferred to Oshawa-Lakeridge Health hospital or Northumberland Hills Hospital.

Algoma Orchards is an apple farming, packing, and juice bottling company which employs approximately 130 people and is the largest agricultural employer in Clarington. There have been no interior fires at the Algoma Orchards processing plant.

St. Mary's Cement employs approximately 120 people. There have been fires at this facility in the past.

## 9. Past Fire Loss and Event History Profile

		2015				2016				2017				2018				2019			
Occupancy Classification		# of Fires	\$ Loss	Injuries	Deaths	# of Fires	\$ Loss	Injuries	Deaths	# of Fires	\$ Loss	Injuries	Deaths	# of Fires	\$ Loss	Injuries	Deaths	# of Fires	\$ Loss	Injuries	Deaths
<b>Group A</b>	Assembly	2	2000	0	0	0	0	0	0	0	0	0	0	0	0	0	0	0	0	0	0
<b>Group B</b>	Detention	0	0	0	0	0	0	0	0	0	0	0	0	0	0	0	0	0	0	0	0
	Care & Treatment	0	0	0	0	1	10000	0	0	0	0	0	0	0	0	0	0	0	0	0	0
<b>Group C</b>	Residential	31	3050800	2	1	24	5450008	4	0	23	1022700	1	0	29	1730450	1	0	28	1410962	6	1
	Mobile Homes Trailers	0	0	0	0	0	0	0	0	0	0	0	0	0	0	0	0	0	0	0	0
<b>Group D &amp; E</b>	Service/Mercantile	2	140000	0	0	2	100500	0	0	0	0	0	0	1	2500	0	0	4	80100	0	0
<b>Group F</b>	Industrial	2	175000	0	0	1	75000	0	0	2	2500500	0	0	1	6500	0	0	3	210000	0	0
<b>Other</b>	Farms/Other	5	94500	0	0	4	262000	0	0	1	8500	0	0	6	285000	0	0	4	306000	0	0
	<b>TOTALS</b>	<b>42</b>	<b>3462300</b>	<b>2</b>	<b>1</b>	<b>32</b>	<b>5897508</b>	<b>4</b>	<b>0</b>		<b>3531700</b>	<b>1</b>	<b>0</b>	<b>37</b>	<b>2024450</b>	<b>1</b>	<b>0</b>	<b>39</b>	<b>2077062</b>	<b>6</b>	<b>1</b>

### Building Stock Profile Risks

Occupancy Classification		Issues/Concerns	Probability	Consequence	Risk Level
<b>Group A</b>	Assembly	Number of occupants/evacuations	Unlikely	Major	Moderate
<b>Group B</b>	Detention	Occupants confined	Rare	Moderate	Low Risk
	Care & Treatment	Occupants' ability to evacuate	Unlikely	Major	Moderate
<b>Group C</b>	Single Family	Fire deaths have occurred in this occupancy	Almost Certain	Moderate	High
	Multi-Unit	Fire deaths have occurred in this occupancy	Almost Certain	Moderate	High
	Hotel/Motel	Unfamiliar with exits	Possible	Moderate	Moderate
	Mobile Homes	Fast fire extension	Possible	Moderate	Moderate
	Other	N/A	N/A	N/A	
<b>Group D &amp; E</b>	Service/ Mercantile	Age of buildings.	Likely	Moderate	Moderate
<b>Group F</b>	Industrial	Dangerous Processes	Likely	Moderate	Moderate
<b>Other</b>	Farms	Lack of firefighting water. Long response time	Almost Certain	Minor	Moderate

**Treatment Options for Top Risks in Clarington**

<b>Mandatory Profiles</b>	<b>Top Risks or Issues/Concerns</b>	<b>Preferred Treatment</b>
<b>Geographic</b>	Lake Ontario Water/Ice rescue boat fires, flooding	<p><b>Mitigate Risk</b> - Clarington is not responsible for services on Lake Ontario. The Coast Guard and DRPS supply assets to respond to Lake Ontario. Should CEFS assistance be required it is covered under Department Policy identified in policy 6.310 Water or Ice Rescue Response.</p> <p>Implement Clarington Flood Response Plan</p> <p>The municipality should review how it wants to address hazards associated with Lake Ontario through an on-going basis.</p>
	Railways Emergency incidents involving train traffic, stopped or slow-moving trains	<p><b>Mitigate Risk</b> - CEFS Department Policy 6.326 addresses Railway Emergency response protocols.</p> <p>Engage with rail companies to share schedules allowing dispatchers to dispatch and inform resources such as 911 about hot box occurrences, level crossing blockages etc.. Review and revise policy as needed.</p> <p>Ensure communications are immediately available should an emergency occur, stopped or slow-moving rail traffic does not impede emergency response vehicles</p> <p>Fire Service personnel be engaged in the development stages of Metro-Linx facilities and routes</p>

**Treatment Options for Top Risks in Clarington**

<b>Mandatory Profiles</b>	<b>Top Risks or Issues/Concerns</b>	<b>Preferred Treatment</b>
	Highways	<p><b>Accept Risk</b> – Costs of response to motor vehicle collisions are reviewed annually. CEFS has agreement with MTO to bill for service on provincial highways and municipal legislation is in place covering response to regional and municipal road MVCs.</p> <p><b>Mitigate Risk</b> – Clarington has detailed municipal legislation dealing with the fiscal aspects of emergency response to motor vehicle collisions. Develop a partnership with highway maintenance company to ensure the safety of emergency scene (blocker vehicles).</p>
	Ganaraska Forest	<p><b>Mitigate Risk</b> – maintain relationship with associated municipal partners associated with the forest and monitor/evaluate activities of the public for emergency response trends. Review and monitor emergency response protocols, firefighter training and public education</p> <p>The Municipality should enhance partnership with the stewards of the Ganaraska Forest to equip and train for the risks associated with fire and rescues in the forest. Explore the possibility of MNRF involvement during an emergency.</p>
<b>Building Stock</b>	F-Industrial – Hazardous Materials. Explosions	<b>Mitigate Risks</b> – Pub Ed, Fire Inspections, Preplanning, engage fire suppression crews
	E – Mercantile – Dangers of type of stock	<b>Mitigate Risks</b> – Pub Ed, Fire Inspections, Preplanning, engage fire suppression crews



**Treatment Options for Top Risks in Clarington**

<b>Mandatory Profiles</b>	<b>Top Risks or Issues/Concerns</b>	<b>Preferred Treatment</b>
	D- Personal Service	<b>Mitigate Risks</b> – Pub Ed, Fire Inspections, Preplanning, engage fire suppression crews
	C- Residential – this occupancy has most fire deaths/injuries	<b>Mitigate Risks</b> – Pub Ed, Smoke & CO Alarm Program, Preplanning, engage fire suppression crews
	B- Institutional – Difficult Evacuation	<b>Mitigate Risks</b> – Pub Ed, Fire Inspections, Preplanning, engage fire suppression crews
	A- Assembly – High number of persons in building	<b>Mitigate Risks</b> – Pub Ed, Fire Inspections, Preplanning, engage fire suppression crews
<b>Critical Infrastructure</b>	Electricity Distribution – CO poisoning	<b>Mitigate</b> – Response protocols, Pub Ed, Smoke & CO Program
	Memorial Hospital Fire	<b>Mitigate</b> – Response protocols, Pub Ed, Fire Inspections, Drills, Pre-Incident planning/training.
	Telecommunications	<b>Mitigate Risk</b> – Response protocols, SOG's and activities
	Durham Region Water Works- hydrants disabled	<b>Accept Risk</b> – Response protocols, SOG's and activities
<b>Demographic</b>	Older Adults – mobility. senses	<b>Mitigate</b> – Targeted Pub Ed programing, develop partnerships with agencies already engaged with older demographic, develop targeted inspection program
	Children – Lack of fire safety knowledge	<b>Mitigate</b> – Pub Ed, age-appropriate, targeted programs fire inspections, engage school boards for partnerships

**Treatment Options for Top Risks in Clarington**

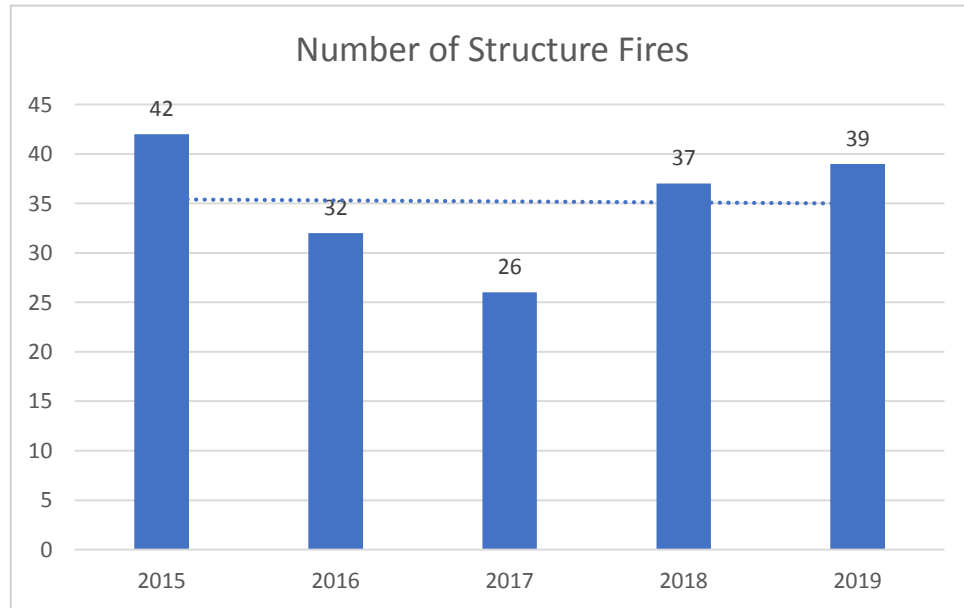
<b>Mandatory Profiles</b>	<b>Top Risks or Issues/Concerns</b>	<b>Preferred Treatment</b>
<b>Hazard</b>	Flood	<b>Mitigate Risk</b> – Public Education, limit development in flood prone areas, Response protocols and activities
	Electrical Outage	<b>Mitigate Risk</b> – Response protocols, SOG's and activities
	Radiation Leak OPG	<b>Mitigate Risk</b> – Develop agreements, response protocols, public education & early warning, SOG's. Guided by Provincial and Durham nuclear response plans
<b>Public Safety Response</b>	Police – Fire investigations	<b>Accept Risk</b> – Response protocols, SOG's & training
	EMS – Assist with pre-hospital care	<b>Accept Risk</b> – Response protocols, SOG's & training
	OPG Fire Brigade assistance by CEFS	<b>Accept Risk</b> – Response protocols, SOG's & training
<b>Community Service Agencies</b>	Red Cross – temporary shelter for victims	<b>Accept Risk</b> – SOG & awareness training
	Salvation Army- on scene refreshments	<b>Accept Risk</b> - SOG, awareness training
	Durham Social Services- assistance	<b>Accept Risk</b> – SOG's & awareness training
	Lions Club – financial assistance for pub ed	<b>Accept Risk</b> – Enhance relationship/partnership
	Rotary Club – financial assistance for pub ed	<b>Accept Risk</b> – Enhance relationship/partnership

**Treatment Options for Top Risks in Clarington**

<b>Mandatory Profiles</b>	<b>Top Risks or Issues/Concerns</b>	<b>Preferred Treatment</b>
<b>Economic</b>	Darlington Nuclear Generating Station	<b>Mitigate</b> – Pub Ed, fire inspections, Pre-Incident Plan (PIP)
	Bowmanville Memorial Hospital	<b>Mitigate-</b> Pub Ed, fire inspections, PIP
	Nursing Homes	<b>Mitigate-</b> Pub Ed, fire inspections, PIP
	Propane Facility	<b>Mitigate-</b> Pub Ed, fire inspections, PIP
<b>Past Loss and History</b>	Group C – Single Family Homes, highest risk	<b>Mitigate-</b> Pub Ed, CO/Smoke alarm program, home escape planning
	Group C- Multi Unit Dwellings high risk	<b>Mitigate-</b> Pub Ed, fire inspections, PIP
	Group E – Older downtown buildings	<b>Mitigate-</b> Pub Ed, fire inspections, PIP
	Group F1 – High hazard industrial	<b>Mitigate-</b> Pub Ed, fire inspections, PIP

### **Fire Statistics in Clarington**

The following statistical information is taken from Standard Incident Reports (SIR) submitted to the Office of the Fire Marshal and Emergency Management (OFMEM) by Clarington Emergency and Fire Services (CEFS). The OFMEM compiles the fire loss statistics for each municipal fire department and makes them available to the municipalities. The OFMEM data presented in this Community Risk Assessment is for the years 2015 to 2019.

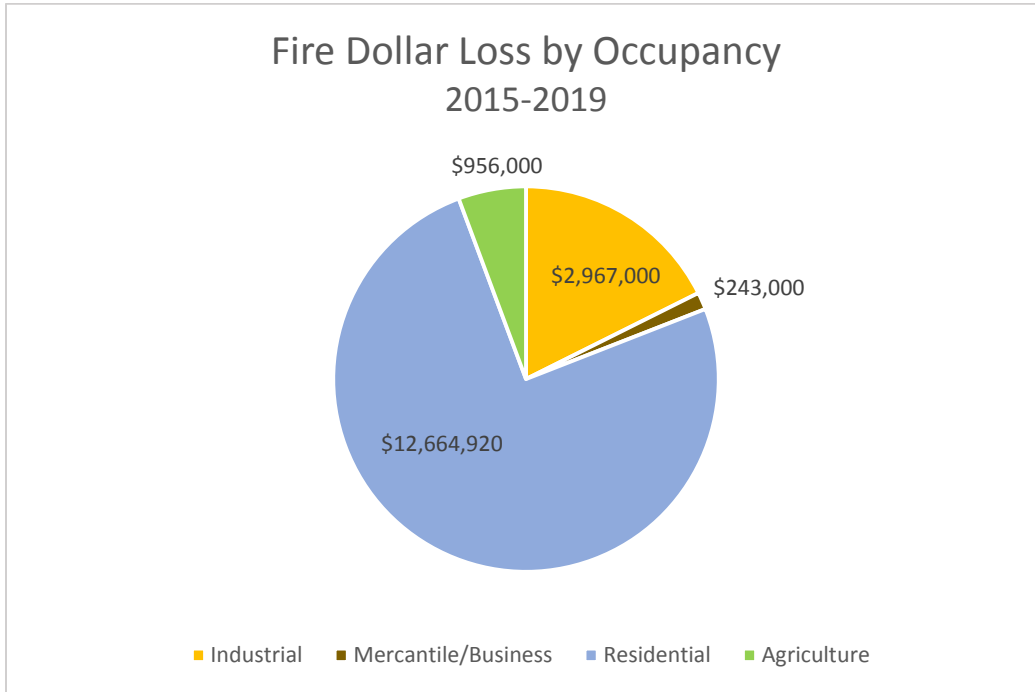


Source: OFMEM Standard Incident Report Data<sup>1</sup>

There is no discernable significant decrease in the number of fires in Clarington for the period 2015-2019.

### **Structure Fire Dollar Loss**

The overwhelming majority of fires for which a dollar loss was reported in Clarington was for the residential or 'C' occupancy. The value of fire loss reported for structure fires for the period 2015 – 2019 was \$12,664,920 and accounts for 75% of the overall dollar loss due to structure fires in Clarington.

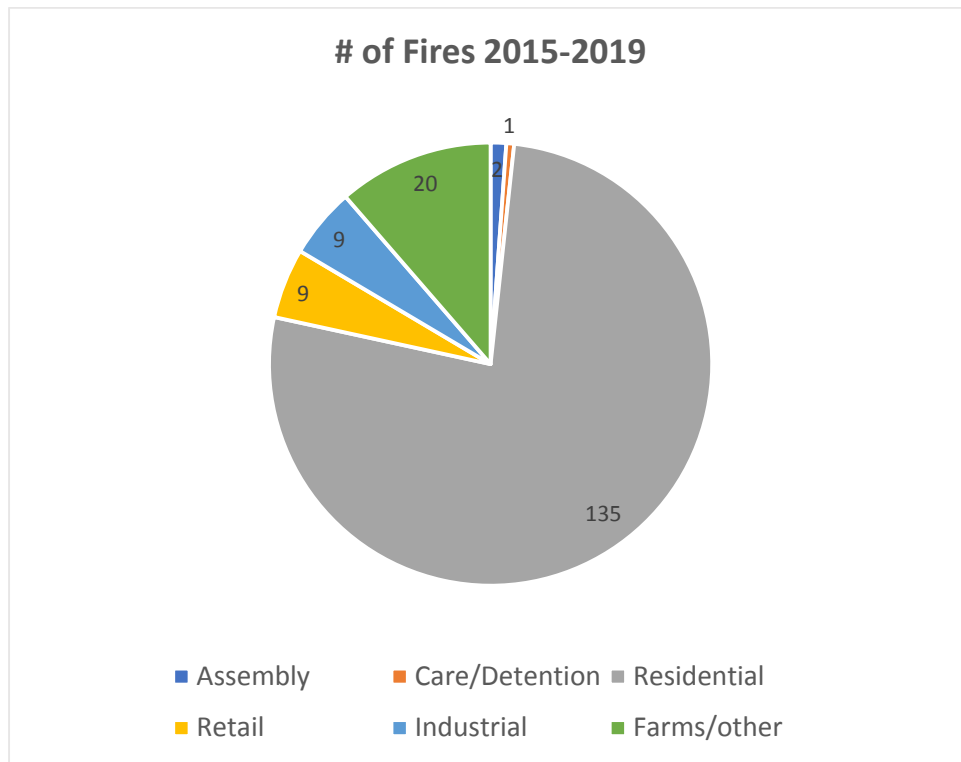


Source: OFMEM Standard Incident Report Data

Occupancy Classification		2015 to 2019	
		# of Fires	Dollars
Group A	Assembly	2	2000
Group B	Institutional	1	10,000
Group C	Residential	135	12,664,920
Groups D & E	Service/Retail	9	323,100
Group F	Industrial	9	2,967,000
Structures not Classified		11	70,000
Agricultural		9	886,000
<b>Totals</b>		<b>176</b>	<b>16,923,020</b>

Source: OFMEM Standard Incident Report Data

Residential type occupancies account for 77% of the structure fires in Clarington.



Source: OFMEM Standard Incident Report Data

### **Current Public Fire and Life Safety Programming**

The current public fire and life safety education activities of the Municipality of Clarington Emergency and Fire Services concentrate on family fire safety in order to address the high percentage demographic of children and young families and the fact that fires which result in injury and death in Clarington occur in residential occupancies.

Schools have at least one copy of the National Fire Protection Association (NFPA) Risk Watch which is an injury prevention-based curriculum. Level 1 of the NFPA 'Learn Not To Burn' school curriculum is also available in elementary schools and is supported by CEFS upon request of teachers.

A Fire Safety House, mobile educational trailer, attends schools and community events on a request basis. The Alarmed for Life Program, (See Department Policy 6.508) is operated on a seasonal basis, from June to September. Alarmed For Life is a public education and fire prevention program where full and part-time fire fighters visit homes to ensure working smoke and carbon monoxide alarms, as required under the Ontario Fire Code, and home fire escape plans are in place.

Family Safety Day is on the last Saturday in September at Fire Station 1. It is suited for families who can visit displays from safety agencies including Fire, Police and Emergency Medical Services.

A continuing concern is our older and mature adults. The large "baby boomers" demographic are continuing to increase this age-related demographic. Clarington also has a large planned exclusive adult community, Wilmot Creek. Clarington Fire concentrates on

the Alarmed for Life and the Older and Wiser programs to address this high-risk demographic segment.

Department Policy #6.502 – Frequency of Fire Safety Inspections, is in place for the inspection frequency of the different types of occupancies in Clarington. Vulnerable Occupancies are required to be inspected annually. Rooming, Boarding and Group Homes are inspected annually. High Hazard F1 Occupancies are inspected every 2 years while Medium and Low hazard industrial occupancies are inspected every 15 years.

Hotels and Motels are inspected every 3 years. Apartments, schools, restaurants, community halls are on a 5 year rotation. Churches are inspected every 10 years. Residential properties continue to be the largest property class where fires occur. The fire deaths in 2015 and 2019 occurred in residential occupancies.

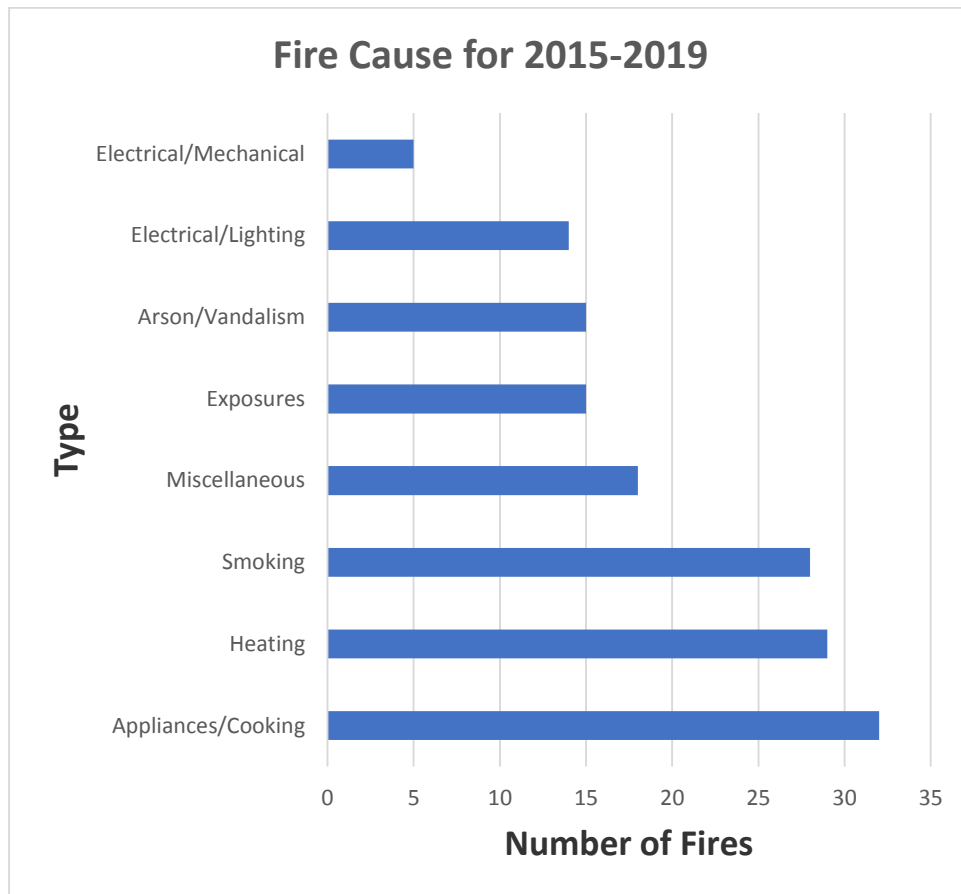
Barn fires are categorized as agricultural. Assembly occupancy fires consisted of a restaurant and an abandoned school building.

### **Fire Cause for 2015-2019**

The leading cause of fires in Clarington, for which a cause is known, is associated with the use of appliances and cooking. The second largest cause of fires in Clarington is associated with heating equipment. The #3 cause of fires in Clarington is linked to smoking. Arson and vandalism were the cause of 15 fires in Clarington. Fifteen structure fires in Clarington were caused due to the exposure to other nearby fires.

Clarington Emergency and Fire Services were not able to determine the cause for 35 (20%) of the structure fires in Clarington for the years 2015-2019.

For comparison purposes, careless cooking is the number one cause of fires across the province of Ontario. The number 2 and 3 causes of fires provincially are heating/appliances and electrical distribution fires.



Note: There were 35 fires with an 'Undetermined' cause for 2015-2019  
 Source: OFMEM Standard Incident Report Data

### **Fire Deaths and injuries**

There were two structure fire deaths and six structure fire related injuries over the period of 2015-2019. All of the deaths and injuries occurred in residential type structure fires. One of the six injuries during this time period was experienced by a Clarington firefighter.

There were two fire fatalities from 2015 to 2019. These deaths show that Clarington's fire death rate is higher compared to the provincial death rate of 6.0 per million during the same period. The provincial death rate has decreased from 8.5 in 2000 to 4.6 in 2019.



### Occupancy Classification and Fire Deaths/Injuries 2015 to 2019

Occupancy Classification		2015		2016		2017		2018		2019	
		D	I	D	I	D	I	D	I	D	I
Group A	Assembly	0	0	0	0	0	0	0	0	0	0
Group B	Institutional	0	0	0	0	0	0	0	0	0	0
Group C	Residential	1	2	0	4	0	1	0	1	1	6
Groups D & E	Commercial	0	0	0	0	0	0	0	0	0	2
Group F	Industrial	0	0	0	0	0	0	0	1	0	0
Misc. Structures		0	0	0	1	0	0	0	1	0	0
<b>Total Deaths / Injuries</b>		1	2	0	5	0	1	0	3	1	8

Source: OFMEM Standard Incident Report Data

It is clear from past fire loss statistics that Clarington's occupancy with the highest risk is the 'C' or residential occupancy. Therefore, significant effort and resources should be applied to promoting fire safety in residential occupancies through the first two lines of fire safety defence, namely, public fire and life safety education and fire prevention safety inspections and appropriate code enforcement.

#### Public Fire and Life Safety Education Programs in Clarington

The following programs have been implemented in the Municipality of Clarington:

- Alarmed for Life – Smoke and carbon monoxide alarm Program – seasonally each year, June to September, under Department policy #6.508
- Learn Not to Burn – Fire Department partnership with local elementary schools
- Risk Watch – a former NFPA school based life safety and injury prevention curriculum
- TAPP-C – Juvenile Arson Prevention Program – on request or court mandated
- Public displays at community events – on request
- Family Safety Day – Annual open house at CEFS Station 1 hosting interactive displays with fire and life safety-oriented organizations
- In-service training for vulnerable occupancy staff - upon request
- Portable fire extinguisher training- on request

- Mobile Fire Safety House - on request
- 'Older and Wiser' – a mature adult fire safety program - on request
- 'Remembering When' – mature adult fire and falls prevention program - on request
- Fire safety presentations - on request under Department policy #6.510

### **Fire Inspections and Code Enforcement**

The following activities are ongoing and performed or facilitated by CEFS fire prevention personnel:

- Fire safety (Fire Code) Inspections upon request/complaint and as established under Department Policy # 6.501 'Mandatory Assessment of Complaints and Requests for Approval'
- Vulnerable Occupancy inspections and fire safety exercises on an annual basis as required under the Ontario Fire Code
- Scheduled routine fire code inspections of various businesses and industrial sites under Department Policy #6.502 'Frequency of Fire Safety Inspections'
- Pre-Incident Planning and site familiarizations under Department Policy #6.504 'Pre-Planning and Familiarization'
- Annual review of Fire Safety plans as required under the Ontario Fire Code
- In-service (fire safety checks) completed by duty crews under Department Policy #6.503 'Risk-Based Evaluation Program Policy'
- Fire investigations under Department Policy # 6.500 'Delegated Authority'

### **Emergency Response**

Clarington has five fire stations within the Municipality to provide the best emergency response and cover of a large geographic area (611 km<sup>2</sup>) and a current population of approximately 105,000.

Every fire station has at least a pumper and a tanker truck. Additional pumper trucks, aerial trucks, rescue trucks and specialized equipment are located throughout the Municipality to assist in emergency operations.

#### **Station 1 (Headquarters)**

Located at 2430 Highway 2 in Bowmanville, Station 1 is a composite fire station with full-time and volunteer firefighters. Station 1 is also home to administration, fire prevention, mechanical and training staff.

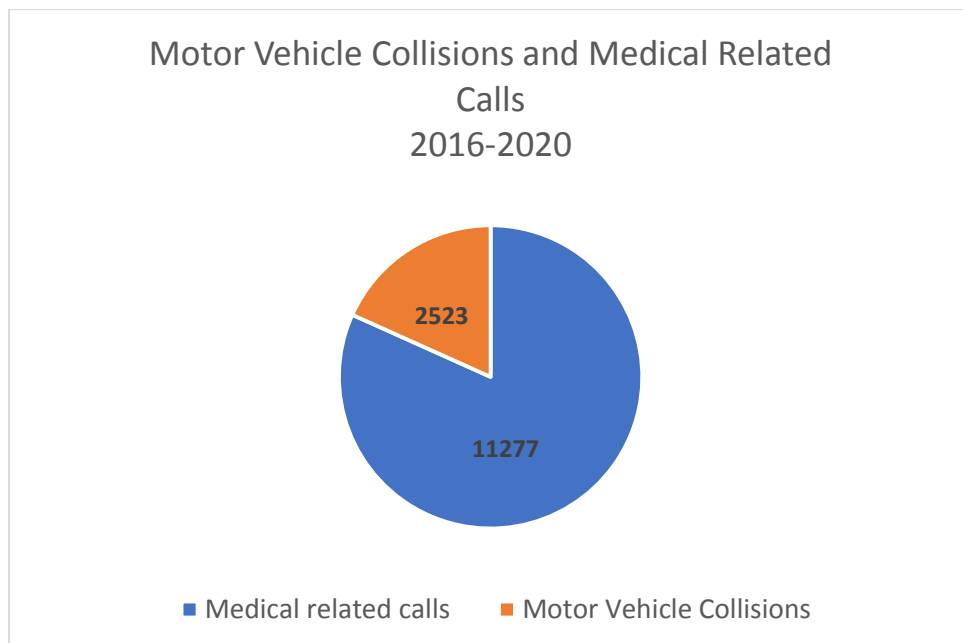
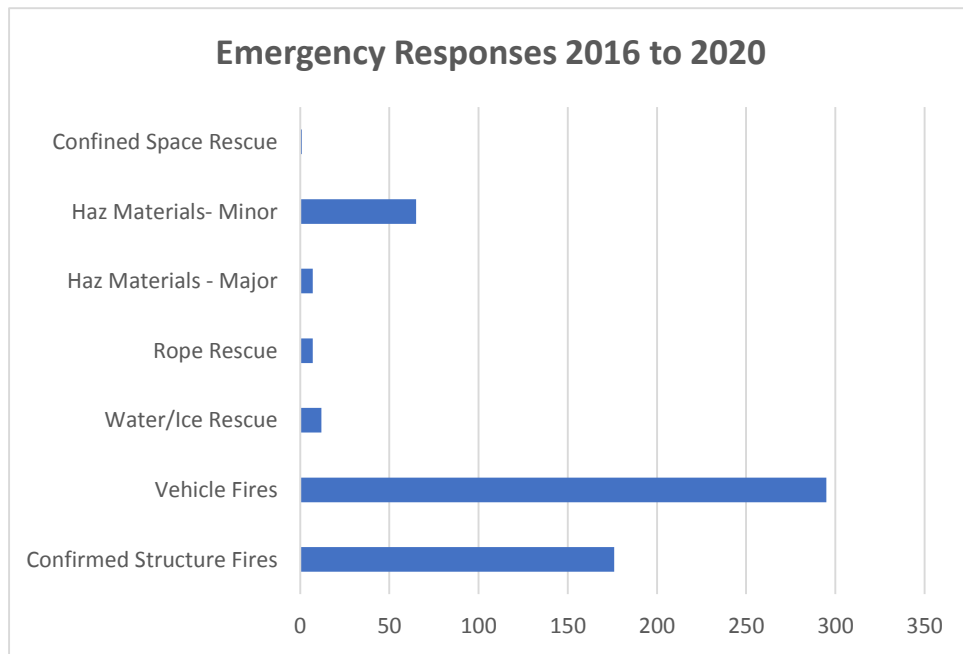
Station 2 is located at 3333 Highway 2 in Newcastle, Station 2 is a composite fire station with full-time and volunteer firefighters.

Station 3 is located at 5708 Main Street in Orono and is staffed by volunteer firefighters.

Station 4 is located at 2611 Trulls Road Courtice, Station 4 is a composite fire station with full-time and volunteer firefighters.

Station 5 is located at 2354 Concession Road 8 in Enniskillen and is staffed by volunteer firefighters.

Emergency response by Clarington Emergency and Fire Services is authorised under the Establishing and Regulating By-law #2017-033.



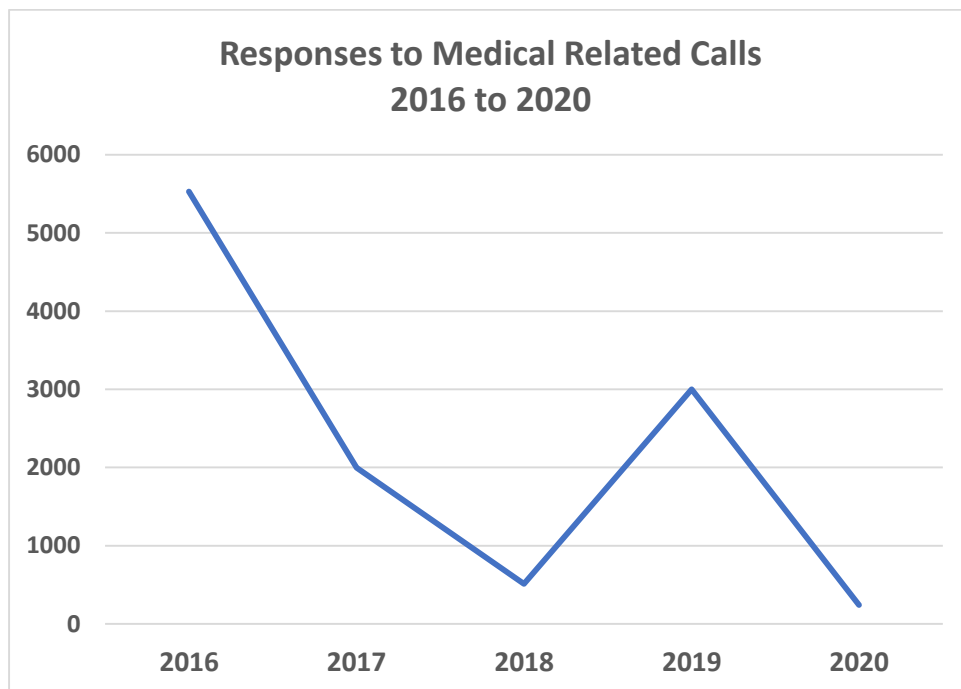
Statistics for the years 2016 – 2020 available from Clarington Emergency and Fire Services indicate that the vast majority of emergency responses by CEFS have historically been medical related and motor vehicle collisions respectively.

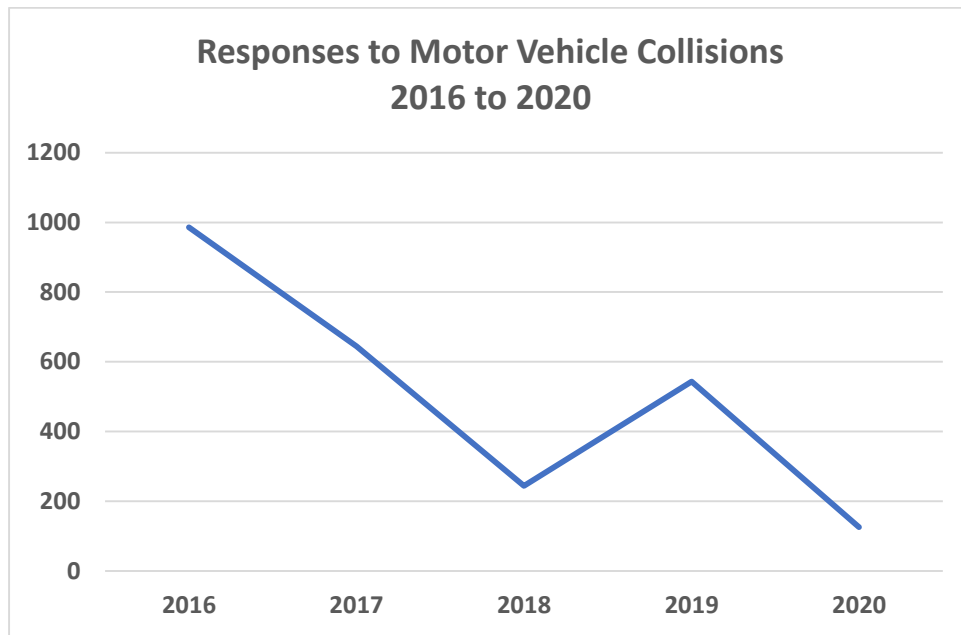
CEFS responded to 295 vehicle fires during those years and were present at 176 structure fires.

CEFS responded to comparatively fewer rescue and hazardous material type emergencies compared to structure and vehicle fires and medical related calls. Interestingly, CEFS responded to only one confined space rescue, in the past five years and has attended about 2 water/ice rescue calls and one rope rescue call in each of those years.

The graphics below detail the medical related and Motor vehicle Collisions responses that CEFS conducted for the five-year period 2016-2020.

They show a significant and continuing downward trend in response to these calls due to the impact of the medical response criteria established during the Covid-19 Pandemic and perhaps less vehicles on the road during lockdowns.





## Conclusions/Recommendations

The Municipality of Clarington continues to provide fire protection services as mandated under the Fire Protection and Prevention Act (FPPA) and the associated municipal Establishing and Regulating By-law #2017-033. The Clarington Emergency and Fire Services are generally organised under the Three Lines of Defence and include:

1. Public Fire and Life Safety Education
2. Fire Prevention and Code Enforcement
3. Fire and Emergency Response

Based upon the information and recommendations contained in this Community Risk Assessment and the concurrent 2021 municipal Fire Master Plan, the existing Establishing and Regulating Bylaw should be revised and approved by Council to update the core services which are to be delivered to residents of Clarington by CEFS. The core services should be formally aligned and prioritized under the fire service Three Lines of Defence.

Based upon statistics for the years 2015 to 2019, residential type occupancies continue to be the highest fire risk. Residences are where most injuries and all deaths occur in Clarington. A more focused approach to addressing fire prevention and fire and life safety education efforts must be directed to this type of occupancy.

The leading cause of fires in Clarington is associated with the use of appliances and cooking. Heating equipment is the second largest cause of fires in Clarington and the third highest cause of fires in Clarington is linked to smoking. Arson and vandalism were the cause of 15 fires in Clarington. Fifteen structure fires in Clarington were caused due to the exposure to other nearby fires.

Seniors/older adults continue to be the identified highest risk demographic group followed by Clarington's youth.

The robust collection of emergency response data and public fire safety education and fire prevention/code enforcement data along with enhanced use of narrative emergency incident 'outcomes' should be a primary focus of CEFS. Analysis of and an associated quality assurance program related to data and statistics associated with the Three Lines of Defence will provide valuable information to CEFS to be able to target public fire and life safety education and fire prevention programming and align precious emergency response resources, especially as significant expected population and building stock growth occurs.

### **Public Fire and Life Safety Education**

The following adjustments to public fire and life safety education should be considered under the auspices of this Community Risk Assessment to enhance this important aspect of public safety:

- a formal and distinct public fire and life safety education division should be established within the Clarington Emergency and Fire Services to address the continuing high occurrence of fires in residential occupancies. This new division will also be well established then, as the expected population growth of approximately 45% comes into play over the next decade and beyond
- establish a community based (municipal, provincial and federal) public fire and life safety education committee. The committee may be empowered to make recommendations to CEFS regarding goals and objectives.
- implement an on-going comprehensive fire response statistical review program for the purposes of analysing fire response data to target identified trends to be addressed by public fire and life safety programming
- implement and track online homeowner-initiated fire prevention inspection self-checklist
- implement and monitor annual public oriented fire and life safety online surveys a
- establish a social media campaign which details "Lessons learned from recent fires"
- enhance various social media information and awareness posts and incorporate the above suggestions on a regular basis
- implement tracked environmental scanning regarding public fire and life safety education efforts and programming provided by CEFS
- increase the council approved funding for public fire and life safety education materials, props, and staff training regarding public fire and life safety education
- replace the former NFPA Risk Watch life safety and injury prevention program to continue and enhance the focus on a reduction in residential fires
- implement the use of homeowner/tenant fire safety based self-checklists

- revitalize the existing Alarmed For Life smoke and carbon monoxide alarm program to a four season (year-round) basis to strive for 100% residential alarm compliance within the Municipality of Clarington
- enhancing the agency partnership base of Family Safety Day to include fire safety educational workshops/seminars and take-home information with agencies such as railway police, 2-1-1 Ontario and TAPP-C representatives

### **Fire Prevention and Code Enforcement**

The following adjustments to fire prevention and code enforcement should be considered under the auspices of this Community Risk Assessment to enhance public safety through the second line of defence:

- the Pre-incident planning program, under Department Policy #6.504 'Pre-Planning and Familiarization', should be reviewed and revised to include the use of available and future technology for the gathering of information and production of readily available pre-incident plans during emergency response and training for all firefighters. Pre-incident Plans should be reviewed for currency and accuracy on a regular basis. Relevant and applicable portions, identified by CEFS staff, contained within NFPA 1620: Standard for Pre-Incident Planning should be utilised by CEFS
- specific Pre-Incident Plan response protocols should be developed for each critical infrastructure identified in the Critical Infrastructure profile
- revise Department Policy #6.503 'Risk-Based Evaluation Program Policy' and acquire requisite documentation and training for company officers and acting company officers, and qualified volunteer firefighters to conduct 'low level' public fire safety (Ontario Fire Code) inspections under the guidance and supervision of the fire prevention division
- establish a Department Policy, utilising business process mapping, for implementation of a robust fire and explosion investigation program, for all CEFS officers and acting officers
- implement a more robust, yet educationally supported and balanced, fire code compliance enforcement program under the Alarmed For life program
- implement an on-going comprehensive fire response statistical review program for the purposes of analysing fire response data to target identified trends to be addressed by enhanced fire prevention inspections (including inspection frequency) and associated code enforcement
- Increased engagement with Planning and Development and Building departments during development or redevelopment activities

### **Emergency Response**

The third line of defence could be made more effective and efficient through consideration, under the auspices of this Community Risk Assessment, of the following items:

- due to the low number of 'low frequency/high risk' rescue type emergencies experienced by the Municipality of Clarington, revise the core services authorised by the Council of the Municipality of Clarington under the Establishing and Regulating by-law and consider providing desired operational and technical level specialty services such as:
  - rope (high and low angle) rescue,
  - hazardous materials responses,
  - water and ice rescue
  - HUSAR
  - confined space and
  - trench rescue
- under external third-party agreements. CEFS personnel would continue to provide the identified services above at the 'awareness' level.
- implement an on-going comprehensive statistical review and quality assurance program for the purposes of analysing fire response data to target identified trends to be addressed by CEFS regarding emergency response needs as expected growth in population and building stock occurs.
- CEFS should implement a robust training industry standard Systematic Approach to Training (SAT) process for the purpose of establishing a fully vetted, council approved and funded training program for all firefighters
- CEFS should develop and issue Clarington centric design guidelines for fire access and emergency access routes due to expected population and building stock growth over the next decade and to address any current fire and emergency vehicle access concerns.



Appendix A: Building Stock/Occupancy details

### Group C Buildings

GROUP C	Address	Town	Last Insp	C.Type	FAS	SPR	STP
Condos	83 Aspen Springs Rd.	Bowmanville	2016/07/05	Com	Y		
Condos	87 Aspen Springs Rd.	Bowmanville	2016/04/20	Com	Y		
Condos	90 Aspen Springs Rd.	Bowmanville	2019/06/03	Com	Y		
Condos	91 Aspen Springs Rd.	Bowmanville	2016/04/20	Com	Y		
Condos	94 Aspen Springs Rd.	Bowmanville	2019/06/03	Com	Y		
Condos	98 Aspen Springs Rd.	Bowmanville	2019/06/17	Com	Y		
Condos	102 Aspen Springs Rd.	Bowmanville	2019/06/17	Com	Y		
Condos	106 Aspen Springs Rd.	Bowmanville	2019/07/15	Com	Y		
Condos	120 Aspen Springs Rd.	Bowmanville	2019/10/11	Com	Y		
Condos	124 Aspen Springs Rd.	Bowmanville	2019/10/11	Com	Y		
Condos	128 Aspen Springs Rd.	Bowmanville	2019/04/10	Com	Y		
Condos	132 Aspen Springs Rd.	Bowmanville	2019/10/11	Com	Y		
Condos	136 Aspen Springs Rd.	Bowmanville	2019/10/11	Com	Y		
Apartments	4 Bernard St.	Bowmanville	2019/09/05	Com	Y		
Apartments	7 Bernard St.	Bowmanville	2019/05/31	Com	Y		
Veltri	133 Church St.	Bowmanville	2018/07/26	NC	Y		Y
Apartments	12 Frank St.	Bowmanville	2016/07/12	NC	Y		
Apartments	14 Frank St.	Bowmanville	2019/06/25	Com	Y		
Apartments	18 Frank St.	Bowmanville	2019/05/31	Com	Y		
Beau Villa Apartments	2906 Highway 2	Bowmanville	2015/01/15	Com	Y		
Apartments	2834 Highway 2	Bowmanville	2018/06/29	Com			
Veltri Complex	68 King St. East	Bowmanville	2017/11/08	NC	Y		
Hendry Apartments	252 King St. East	Bowmanville	2016/02/10	NC	Y		Y
Apartments	63 Lambs Lane	Bowmanville	2019/08/14	Com	Y		
Rental Townhouses	100 Liberty St. North	Bowmanville	2019/09/13	Com			
Forestree Place	108 Liberty St. North	Bowmanville	2019/01/03	NC	Y		
Apartments	138 Liberty St. North	Bowmanville	2016/07/06	Com	Y		
Apartments	251 Liberty St. North	Bowmanville	2017/05/24	Com	Y		
CornerStone Apartments	76 Liberty St. South	Bowmanville	2016/03/10	Com	Y		
Devonshire Place	145 Liberty St South	Bowmanville	2016/05/23	NC	Y		Y
Apartments Apex Mgt	15 Nelson St.	Bowmanville	2018/05/29	Com	Y		
Apartments	81 Ontario St.	Bowmanville	2019/08/15	NC	Y		
Townhouses	120 Port Darlington Rd.	Bowmanville	2019/09/19	Com			

### Group C Buildings

<b>GROUP C</b>	<b>Address</b>	<b>Town</b>	<b>Last Insp</b>	<b>C.Type</b>	<b>FAS</b>	<b>SPR</b>	<b>STP</b>
Condos	144 Queen St.	Bowmanville	2019/12/04	NC	Y		Y
Marianna Villa	206 Simpson Ave.	Bowmanville	2019/10/02	Com	Y		
Condos	95 Wellington St.	Bowmanville	2017/01/25	Com	Y		
Apartments	4 Neilson St. East	Bowmanville	2019/10/31	Com	Y	Y	
Apartments	2 Nelson St. East	Bowmanville	2019/10/31	Com	Y	Y	
Pine Ridge Motel	1607 Highway 2	Courtice	2018/09/13	Com			
Parkview	165 King Ave. East	Newcastle	2018/12/12	Com	Y		
Condos	375 Lakebreeze Dr.	Newcastle	2016/04/20	Com	Y	Y	
Condos	385 Lakebreeze Dr.	Newcastle	2016/04/20	Com	Y	Y	
Condos	395 Lakebreeze Dr.	Newcastle	2016/04/20	Com	Y	Y	
Condos	55 Shipway Ave.	Newcastle	2019/11/07	Com	Y		
Condos	65 Shipway Ave.	Newcastle					
Condos	75 Shipway Ave.	Newcastle	2019/11/07	Com	Y		
Apartments	5330 Main St.	Orono	2018/04/09	Com	Y		
Apartments	5367 Main St.	Orono	2019/11/07	Com	Y	Y	

### Boarding, Rooming and Lodging Houses

<b>BOARDING ROOMING LODGING</b>	<b>Address</b>	<b>Town</b>	<b>Last Insp</b>	<b>C.Type</b>	<b>FAS</b>	<b>SPR</b>	<b>STP</b>
Rooming/Boarding	106 Church St.	Bowmanville	2019/05/19	Com	Y		
Wilkins Home for Special Care	2005 Green Rd.	Bowmanville	2017/09/19	Com			
Maxwell Home for Special Care	23 Lovers Lane	Bowmanville	2019/11/12	Com	Y		
Gust Home for Special Care	138 Queen St.	Bowmanville	2019/11/01	Com	Y		
Bethesda House Women's Shelter	121 Queen St	Bowmanville	2019/03/06	Com	Y		
Therault Home for Special Care	1652 Taunton Rd.	Courtice	2019/12/05	Com	Y		
Christian Horizons- Group Home Res.	1711 Bloor St.	Courtice	2019/05/03	Com			
Collaborative Community Connections	12 Millstream Lane	Hampton	2019/11/04	Com			
Christian Horizons- Group Home Res.	30 Hart Blvd	Newcastle	2019/12/11	Com	Y		

### Assembly (Other)

ASSEMBLY (Other)	Address	Town	Last Insp	C.Type	FAS	SPR	STP
Bowmanville Community Centre	2444 Baseline Rd.	Bowmanville	2019/10/15	Com	Y		
Bowmanville Golf and Country Club	3845 Middle Rd.	Bowmanville		Com	Y		
Bowmanville Memorial Park Clubhouse	120 Liberty St. South	Bowmanville	2009/08/04	Com	Y		
Cineplex Odeon	111 Clarington Blvd.	Bowmanville	2018/10/18	NC	Y	Y	
Clarington Beech Centre	26 Beech Ave	Bowmanville	2018/04/26	Com	Y	P	
Clarington Community Resource Centre	132 Church St.	Bowmanville	2019/10/23	Com	Y		
Darlington Soccer Club	2375 Baseline Rd.	Bowmanville	2019/06/06	NC			
Darlington Sports Centre	2276 Taunton Rd.	Bowmanville	2016/12/19	Com	Y		Y
Garnett B Rickard Arena	2440 Highway 2	Bowmanville	2020/01/14	NC	Y	Y	
Mosport International raceway	3233 Concession Rd. 10	Bowmanville	2019/07/31	NC	Y		
Newcastle Community Hall	20 King Ave. West	Bowmanville	2019/04/02	Com	Y		
Royal Canadian Legion Office	109 King St. East	Bowmanville	2010/12/17	Com	Y		
Solina Community Hall	1964 Concession Rd. 6	Bowmanville	2011/04/06	Com			
Wilmot Creek Recreation Centre	1 Wheelhouse Dr.	Bowmanville	2019/07/23	Com			
Bowmanville Museum	37 Silver St.	Bowmanville	2012/10/23	Com	Y		
Sarah Jane Heritage Museum	62 Temperance St.	Bowmanville	2010/08/12	Com			
Visual Arts Centre	143 Simpson Ave.	Bowmanville	2016/02/02	Com		Y	
Courtice Community Center	2950 Courtice Rd	Courtice	2019/03/28	NC	Y	Y	
South Courtice Arena	1595 Prestonvale Rd.	Courtice	2017/10/26	NC	Y	Y	
Haydon Auction Barn	2498 Concession Rd. 8	Hampton	2002/04/25	Com			
Haydon Community Hall	2503 Concession Rd. 8	Hampton	2011/04/06	Com			
Hampton Community Hall	5360 Old Scugog Rd.	Hampton	2009/03/27	Com			
Kendal Community Centre	6742 Regional Rd 18	Kendal	2009/03/04	Com	Y		
Kendal Orange Hall	15 Kendal Church St.	Kendal		Com			
Clarke Museum	7086 Old Kirby School Rd.	Kirby	2008/03/01	Com			
Brownsdale Community Centre	2226 Golf Course Rd.	Newcastle	2009/03/04	Com			
Newcastle & District Recreational Complex	1780 Rudell Rd.	Newcastle	2013/06/13	NC	Y	Y	
Newcastle Memorial Arena	103 Caroline St.	Newcastle	2011/08/15	Com	Y	Y	
Newcastle Library	150 King Ave. E	Newcastle	2015/07/07	NC		Y	
Newtonville Hall	21 Church Lane	Newtonville	2009/03/04	Com			
Stapleton Auctions	4532 Highway 2	Newtonville	2009/05/07	Com			
Orono Arena	2 Princess St.	Orono	2016/09/07	Com	Y	Y	
Orono Town Hall	5315 Main St.	Orono	2011/04/06	Com			

### Assembly (Other)

<b>ASSEMBLY (Other)</b>	<b>Address</b>	<b>Town</b>	<b>Last Insp</b>	<b>C.Type</b>	<b>FAS</b>	<b>SPR</b>	<b>STP</b>
Orono Library	127 Church St.	Orono	2014/02/26	Com			
Tyrone Community Centre	2716 Concession Rd. 7	Tyrone	2013/06/04	Com	Y		
Tyrone Orange Community Hall	2699 Concession Rd. 7	Tyrone	2013/11/19	Com			

### Hotels/Motels

<b>Hotels and Motels</b>	<b>Address</b>	<b>Town</b>	<b>Last Insp</b>	<b>C.Type</b>	<b>FAS</b>	<b>SPR</b>	<b>STP</b>
Liberty Inn	150 Liberty St. South	Bowmanville	2019/08/23	Com			
Best Western	160 Liberty St. South	Bowmanville	2019/10/21	Com	Y	Y	Y
Port of Darlington Marina	70 Port Darlington Rd.	Bowmanville					
Holiday Inn Express	37 Spicer Square	Bowmanville	2019/10/03	NC	Y	Y	Y
Comfort Inn & Suites	5 Spicer Square	Bowmanville	2018/07/24	Com	Y	Y	Y
Twin Oakes Motel	3511 Concession Rd.4	Orono	2016/11/28		Y		

### Day Care

DAYCARE	Address	Town	Last Insp	C.Type	FAS	SPR	STP
Edna Thomson Daycare	410 North Scugog Crt.	Bowmanville	2019/06/26	NC	Y		
Edu Kids Child Care	2665 Concession Rd 3	Bowmanville	2019/01/08	Com	Y		
Happy Apple Children's	104 Waverley Rd Unit 206	Bowmanville	2019/01/10	NC		Y	
Kawartha Child Care - Charles Bowman	195 Bons Ave	Bowmanville	2019/03/28	NC	Y	Y	
Kawartha Child Care - Holy Family	125 Aspen Springs Drive	Bowmanville	2019/04/08	NC	Y	Y	
Pine Ridge Nursery School	178 Church Street	Bowmanville	2019/01/25		Y		
Umbrella Central Day Care - Waverley PS	168 Waverley Road	Bowmanville	2019/03/05	NC	Y		
YMCA Day Care - St Joseph	90 Parkway Crescent	Bowmanville	2019/02/19	NC	Y	Y	
Compass Early Learning - Harold Longworth	350 Longworth Avenue	Bowmanville	2020/01/20	NC	Y	Y	
Umbrella Central Day Care - Duke of Cambridge	47 Liberty Street North	Bowmanville	2020/03/04	NC	Y	Y	
Umbrella Central Day Care - Vincent Massey	10 Church Street	Bowmanville	2019/03/07	NC	Y	Y	
YMCA Day Care - Dr. Ross Tiley	45 West Side Drive	Bowmanville	2019/04/02	NC	Y		
YMCA Day Care - John M James	175 Mearns Avenue	Bowmanville	2019/08/13	NC	Y	Y	
YMCA Day Care - St Elizabeth	610 Longworth Avenue	Bowmanville	2019/02/19	NC	Y	Y	
Blaisdale Montessori School	80 Rhonda Blvd.	Bowmanville		NC	Y		
YMCA Day Care - Central PS	120 Wellington Street	Bowmanville	2020/01/28	Com	Y		
Maple Grove Child Care Center	2197 Maple Grove Rd.	Bowmanville		Com			
Edna Thompson Early Learning & Child Care Centre	156 Church Street	Bowmanville	2019/01/17	Com	Y		
Viola-Leger	116 Ontario Street	Bowmanville	2019/10/17	Com	Y	Y	
Bright Smiles Daycare	68 King Street East	Bowmanville		Com	Y	Y	
Sunbeamers Childcare	2805 Highway #2	Bowmanville		Com			
Helping Hands Daycare	2727 Courtice Rd Suite 201	Courtice	2019/01/15		Y		
Kawartha Child Care - Good Sheperd	20 Farmington Dr	Courtice	2019/01/28	NC	Y	Y	
Kawartha Child Care - Mother Teresa	78 Glenabbey	Courtice	2019/03/28	NC	Y		
St Mary Of Leuca Day Care Centre	3810 Courtice Road North	Courtice	2019/01/15		Y		
YMCA Day Care - G.J. McGillivray	75 Meadowglade	Courtice	2019/03/26	NC	Y	Y	
YMCA Day Care - Dr. Emily Stowe	71A Sandringham Drive	Courtice	2019/09/12		Y		
Umbrella Central Day Care - ST Worden	1462 Nash Road	Courtice	2020/02/21	NC	Y		
YMCA Day Care - Lydia Trull	80 Avondale Drive	Courtice	2020/02/26	NC	Y	Y	
YMCA Day Care - Courtice North	1675 Nash Road	Courtice	2020/01/29	NC	Y	Y	
Ultimate School Ageds	1685 Bloor Street	Courtice		NC	Y		
Wee Watch	2651 Trulls Road, Unit 4	Courtice		NC			
Leo Cleary - Compass	3820 Courtice Rd North	Courtice	2019/03/05	NC	Y		

### Day Care

<b>DAYCARE</b>	<b>Address</b>	<b>Town</b>	<b>Last Insp</b>	<b>C.Type</b>	<b>FAS</b>	<b>SPR</b>	<b>STP</b>
Ultimate School Ager	2301 Trulls Rd	Courtice		Com	Y		
KidsFirst Child Care	1403 - Unit 7 King Street	Courtice	2019/07/30	NC	Y	Y	
Beyond Our Dreams Preschool and Daycare	1731 Bloor St.	Courtice		Com			
YMCA Day Care - Enniskillen PS	8145 Old Scugog Road	Enniskillen	2020/01/21	NC	Y	Y	
YMCA Day Care - Hampton PS	43 Ormiston Street	Hampton	2019/04/08	NC	Y		
PRYDE Day Care-St Francis	1774 Rudell Road	Newcastle	2019/02/21		Y	Y	
YMCA Day Care - Newcastle PS	50 Glass Court	Newcastle	2019/04/10	NC	Y	Y	
Sunbeamers Child Care	978 Regional Road 17	Newcastle					
Compass Early Learning - Orono PS	171 Church Street	Orono	2020/02/25		Y	Y	



### Schools

SCHOOLS	Address	Town	Last Insp	C.Type	FAS	SPR	STP
Holy Family Catholic Elementary School	125 Aspen Springs Dr.	Bowmanville	2019/04/08	NC	Y	Y	
Charles Bowman Public School	195 Bons Ave.	Bowmanville	2019/03/28	NC	Y	Y	
Vincent Massey Public School	10 Church St.	Bowmanville	2019/03/07		Y	Y	
Duke of Cambridge Public School	47 Liberty St. North	Bowmanville	2020/03/04	NC	Y	Y	
Harold Longworth Public School	350 Longworth Dr.	Bowmanville	2020/01/20	NC	Y	Y	
St. Elizabeth Catholic Elementary School	610 Longworth	Bowmanville	2019/02/19	NC	Y	Y	
St. Joseph Catholic Elementary School	90 Parkway Cres.	Bowmanville	2019/02/19	NC	Y	Y	
Waverley Public School	168 Waverly Rd.	Bowmanville	2019/03/05		Y		
Dr. Ross Tilley Public School	45 West Side Dr.	Bowmanville	2019/04/02	NC	Y	Y	
John M. James Public School	175 Mearns Ave.	Bowmanville	2020/01/27	NC	Y	Y	
Four Winds Montessori School	116 Church St.	Bowmanville	2019/09/12		Y		
Clarington Central Secondary School	200 Clarington Blvd.	Bowmanville	2006/10/19	NC	Y	Y	
Centre for Individual Studies (Clarington CIS)	140 High St.	Bowmanville	2002/03/20		Y		
Bowmanville High School	49 Liberty St. North	Bowmanville	2004/05/04		Y		
Knox Christian School	410 North Scugog Cr.	Bowmanville	2018/04/04	NC	Y		
Blaisdale Montessori School	80 Rhonda Blvd.	Bowmanville	2006/01/16		Y		
St. Stephen's Catholic Secondary School	300 Scugog St.	Bowmanville	2008/11/05	NC	Y	Y	
Central Public School Bowmanville	120 Wellington St.	Bowmanville	2020/01/28		Y		
Durham Christian High School	340 West Scugog Lane	Bowmanville	2009/02/25	NC	Y		
Bowmanville CIS Campus	2226 Maple Grove Road	Bowmanville		NC	Y		
Knox Christian School	410 North Scugog Rd	Bowmanville		NC	Y		
Ecole Elementaire	116 Ontario Street	Bowmanville		NC	Y	Y	
Monsignor Leo Cleary Elementary School	3820 Courtice Rd.	Courtice	2019/03/05		Y		
Good Shepherd Catholic Elementary School	20 Farmington Dr.	Courtice	2019/01/28	NC	Y	Y	
Dr. G.J. MacGillivray Public School	75 Meadowglade Rd.	Courtice	2019/03/26	NC	Y	Y	
Dr. Emily Stowe Public School	71 Sandringham Dr.	Courtice	2019/09/12	NC	Y		
Lydia Trull Public School	80 Avondale Dr.	Courtice	2020/02/26	NC	Y	Y	
S. T. Worden Public School	1462 Nash Rd.	Courtice	2020/02/21		Y		
Courtice North Public School	1675 Nash Rd.	Courtice	2020/01/29		Y	Y	
Holy Trinity Catholic Secondary School	2260 Courtice Rd.	Courtice	2015/01/29	NC	Y	Y	
Courtice Secondary School	1717 Nash Rd.	Courtice	2016/02/25		Y		
Courtice Clubhouse	2038 Nash Rd.	Courtice			Y		
Dr. G. J. MacGillivray Public School	75 Meadowglade Road.	Courtice		NC	Y	Y	

### Schools

<b>SCHOOLS</b>	<b>Address</b>	<b>Town</b>	<b>Last Insp</b>	<b>C.Type</b>	<b>FAS</b>	<b>SPR</b>	<b>STP</b>
Hampton Junior Public School	43 Orminston St.	Hampton	2019/04/08		Y		
Enniskillen Public School	8145 Old Scugog Cr.	Hampton	2020/01/21		Y		
M.J. Hobbs Senior Public School	2296 Taunton Rd.	Hampton	2020/02/05		Y	Y	
Newcastle Public School	50 Glass Cr.	Newcastle	2019/04/10	NC	Y		
Mother Teresa Catholic Elementary School	78 Glenabbey Dr.	Newcastle	2019/03/28		Y		
St. Francis of Assisi Elementary School	1774 Rudell Rd.	Newcastle	2019/02/21	NC	Y	Y	
The Pines Senior Public School	3421 Highway 35/115	Newcastle	2012/12/05		Y		
Clarke High School	3425 Highway 35/115	Newcastle	2015/04/17		Y		
Summit Montessori School	20 Roberts Street West	Newcastle			Y		
Newtonville Education Center	1427 Newtonville Rd	Newtonville		NC	Y		
Orono Public School	171 Church St. N.	Orono	2020/02/25		Y	Y	
Kirby Professional Learning Centre	3675 Concession Rd. 7	Orono	2009/01/12	Com	Y		

### Places of Worship

<b>PLACES OF WORSHIP</b>	<b>Address</b>	<b>Town</b>	<b>Last Insp</b>	<b>C.Type</b>	<b>FAS</b>	<b>SPR</b>	<b>STP</b>
Newcastle Fellowship Baptist Church	200 King Ave. East	Newcastle		NC	Y		
Saint Francis of Assisi Parish	214 King Ave. East	Newcastle					
Claim Newcastle United Church	84 Mill St. South	Newcastle		Com			
St. George's Anglican Church	250 Mill St. South	Newcastle		Com			
Crossroads Christian Assembly	978 Regional Rd. 17	Newcastle					
Newtonville United Church (closed)	2041 Newtonville Rd.	Newtonville		Com			
Shiloh United Church	4698 Concession Rd. 5	Newtonville		Com			
St. Savior's Anglican Church	23 Mill St.	Orono		Com			
Orono United Church	111 Church St. North	Orono		Com			

### Vulnerable Occupancies

<b>VULNERABLE OCCUPANCIES</b>	<b>Address</b>	<b>Town</b>	<b>Last Insp</b>	<b>C.Type</b>	<b>FAS</b>	<b>SPR</b>	<b>STP</b>
Seasons	65 Clarington Blvd	Bowmanville	2019/10/19	NC	Y	Y	
The Participation House	258 West Scugog Lane	Bowmanville	2019/07/30		Y	Y	
Community Living Clarington	706 Holt Road	Bowmanville	2019/09/23		Y	Y	
Bowmanville Creek	105 Queen Street	Bowmanville	2019/08/14	NC	Y	Y	
Strathaven Lifecare Center	264 King St. E	Bowmanville	2019/11/28		Y	Y	
Glen Hill Marnwood LTC	26 Elgin Street	Bowmanville	2019/11/21		Y	Y	
Forestview	2165 Conc. Rd #10	Burketon	2019/12/13	Com	Y	Y	
Christian Horizons	2802 Highway #2	Clarington	2019/10/24		Y	Y	
Community Living Clarington	6758 Enfield Road	Clarington	2019/08/14		Y	Y	
White Cliffe Terrace	1460 Highway #2	Courtice	2019/10/23	NC	Y	Y	
Harmony Estates	3589 Tooley Road	Courtice	2019/07/25	Com		Y	
Community Living Clarington	4794 Old Scugog Road	Hampton	2020/07/16		Y	Y	
Fosterbrook LTC	330 King Ave West	Newcastle	2019/11/14		Y	Y	

### High Hazard Industrial

<b>F1 - HIGH HAZARD</b>	<b>Address</b>	<b>Town</b>	<b>Last Insp</b>	<b>C.Type</b>	<b>FAS</b>	<b>SPR</b>	<b>STP</b>
Canada Rubber Group	405 Lake Rd.	Bowmanville	2019/11/21	NC	Y	Y	Y
CARS	71 Mearns Court	Bowmanville	2015/01/01	NC			
Carstar Autobody	163 Baseline Rd East	Bowmanville	2019/05/07	NC			
CK Collision	83 Mearns Court	Bowmanville	2019/05/07	NC			
GFL	322 Bennett Rd.	Bowmanville	2019/11/26	NC	Y	Y	Y
Graham Rubber	11 Caristrap St.	Bowmanville	2019/08/29	NC			
Tank Traders	40 Port Darlington Rd	Bowmanville	2019/11/28				
Joe Domitrovik Autobody	3872 Courtice Rd	Courtice	2020/01/07	Com			
Roy Nichols Autobody Shop	1752 Highway 2	Courtice	2019/05/19			Y	
Body by Chrome	1617 Ovens Rd.	Newtonville	2019/03/28	Com			

### Medium Hazard Industrial

<b>F2 - MEDIUM HAZARD</b>	<b>Address</b>	<b>Town</b>	<b>Last Insp</b>	<b>C.Type</b>	<b>FAS</b>	<b>SPR</b>	<b>STP</b>
Bowmanville Wood Products	261 Baseline Rd. East	Bowmanville	2009/03/09				
4 Seasons Metal Roofing	78 Mearns Court	Bowmanville		NC			
First Student Canada	80 Mearns Court	Bowmanville		NC			
A & C Tool	79 Mearns Court	Bowmanville		NC			
Salit Steel	222 Baseline Rd. East	Bowmanville		NC			
Trilinks Communication	21 Caristrap	Bowmanville		NC			
CNC Custom Machine & Fabricating	18 Caristrap	Bowmanville		NC			
Durham Pattern & Model	22 Caristrap	Bowmanville		NC			
Greely Containment & Rework	200 Baseline Rd. East	Bowmanville	2010/07/28	NC			
Elite Truck & Trailer Repair	210 Baseline Rd. East	Bowmanville		NC			
Preston Transport	420 Baseline Rd. West	Bowmanville		NC			
Toyota Distribution Centre	1050 Lambs Rd	Bowmanville		NC	Y	Y	
Clarington Nissan	23A Spicer Square	Bowmanville		NC			
Clarington Honda	29 Spicer Square	Bowmanville		NC			
Dom's Auto Parts	1604 Baseline Rd. W	Courtice	2016/03/07				
True North Home Comfort	1700 Baseline Rd. West	Courtice		NC			
Manufacturing	60 Courtice Crt.	Courtice	2002/10/02	NC			
Roy Nichols Motors	2728 Courtice Rd.	Courtice	2019/05/22	NC	Y		
Courtice Auto Wreckers CLOSED?	3090 Hancock Rd.	Courtice					
Courtice Auto Sales	1577 Highway 2	Courtice		NC			
Alpa Engineered Systems	17 Cigas Rd.	Courtice	2017/07/28	NC			
Rental Hub	1987 Baseline Rd West	Courtice	2015/03/03	Com			
CTT Auto Transport	1960 Baseline Rd West	Courtice	2018/01/01	NC			
Horner's Automotive	14 Courtice Court	Courtice		NC			
Dy-Tech	7 Progress Dr.	Courtice					
AWC	60 Courtice Crt.	Courtice	2002/10/02	NC			
RLM Manufacturing	4 Progress Dr.	Courtice	2008/03/19				
RLM Manufacturing	59 Courtice Court	Courtice	2008/02/18	NC			
Halminen Homes	1748 Baseline Rd West	Courtice	2007/01/01	Com			
Brandon Kitchens	1732 Baseline Rd West	Courtice	2007/01/01	NC			
Mike's Transmission	1700 Baseline Rd West	Courtice		Com			
Miche Canada	1712 Baseline Rd West	Courtice	2019/04/24	NC			
Ranfar Steel	1698 Baseline Rd West	Courtice	2017/01/01	NC			

### Medium Hazard Industrial

<b>F2 - MEDIUM HAZARD</b>	<b>Address</b>	<b>Town</b>	<b>Last Insp</b>	<b>C.Type</b>	<b>FAS</b>	<b>SPR</b>	<b>STP</b>
Bill's Truck Shop	1682 Baseline Rd West	Courtice		NC			
Courtice Truck & Trailer	1672 Baseline Rd West	Courtice		NC			
SA Wilsons	1666 Baseline Rd West	Courtice		NC			
Baseline Custom Fabricating	1041 Trulls Rd	Courtice	2017/01/01	NC			
Glen Middleton Mechanical	107 Cigas Rd	Courtice		NC			
McFaul Fencing	83 Cigas Rd	Courtice					
Sav-Tech Solvent	80 Cigas Rd	Courtice					
Bobcat East	45 Cigas Rd	Courtice	2017/01/23	NC			
BBG Central Automatic Doors	1710 Darlington Park Rd	Courtice					
Covanta	1835 Energy Drive	Courtice	2018/11/20	NC	Y	Y	Y
Courtice Water Pollution Control	100 Osborne Rd	Courtice	2008/01/07			Y	
Co-Part Toronto	175 Osborne Rd	Courtice	2019/09/25	NC			
Black & McDonald Nuclear Services	81 Osborne Rd	Courtice		NC			
Darlington Energy Complex	1855 Energy Drive	Courtice		NC			
Haydon Automotive	2486 Concession Rd.8	Enniskillen		Com			
Hampton Garage	5720 Old Scugog Rd.	Hampton			Y	Y	
Nicholls Auto	2376 Taunton Rd.	Hampton		NC			
Newcastle Recycling	4349 Concession Rd. 4	Hampton	2016/05/12				
Cannabis Facility	314 Bennett Rd.	Newcastle	2018/04/24	NC	Y	Y	
Cannabis Facility	1100 Bennett Rd	Newcastle		NC			
Cowanville Auto Wreckers	91 Cowanville Rd.	Newcastle	2016/03/23				
Algoma Orchards	201 Regional Rd. 42	Newcastle		NC	Y		
Don's Auto Shop	3400 Highway 35/115	Newcastle					
Storage Facility	343 Monroe St.	Newcastle		NC			
My Mechanics	275 Toronto St.	Newcastle					
Sunspace Sunrooms	300 Toronto St	Newcastle	2018/09/12	NC			
Newcastle Salvage	3753 Metcalf St	Newcastle	2015/01/01	Com			
El Rod Holdings	19 Tamblyn Rd	Orono	2014/02/20	NC			
Foundation Distributing	9 Cobble Dick St	Orono		NC			
RACE Mechanical Systems	9 Cobble Dick St	Orono		NC			
Orono Coop	5968 Co-op Rd.	Orono	2016/01/01	Com			

### Restaurants

RESTAURANTS	Addresses	Town	Last Insp.	C.Type	FAS	SPR	STP
A Stone's Throw Pub & Grill	39 Martin Rd	Bowmanville	4-Jul-18			Y	
Al's Famous Pizza	39 Martin Rd	Bowmanville	18-Jul-17				
A-One Delights	109 King St West	Bowmanville	19-Apr-18 NC				
Baker's Dozen	96 King St East	Bowmanville	10-Mar-10				
Bar Burrito	2360 Highway 2	Bowmanville	15-Mar-19				
Boston Pizza	2372 Highway 2	Bowmanville	12-Dec-16		Y	Y	
Bowmanville Family Restaurant	231 King St East	Bowmanville	21-Nov-17				
Bowmanville Thai	9 King St East	Bowmanville	5-Mar-19				
Burger Delight	100 Mearns Rd. #1	Bowmanville	18-Jul-17				
Burger King	105 Clarington Blvd	Bowmanville	24-Nov-16				
Captain Georges	219 King St East	Bowmanville	4-Oct-17				
Chanterelle Bistro	33 Division St	Bowmanville	1-Jan-13				
C-Level Sports Lounge	70 Port Darlington Rd	Bowmanville	1-Jan-10				
Coffee Time	243 King St. E	Bowmanville	1-Jan-09				
Copper Branch	2377 Highway 2	Bowmanville	21-Nov-18				
Copperworks Brew Pub and Restaurant	7 Division St	Bowmanville	14-Mar-16				
Dairy Queen Grill & Chill	2 Spicer Square	Bowmanville	1-Jan-10				
Day Break Restaurant	2334 Highway 2 Unit H3	Bowmanville	31-Jan-18				
Domino's Pizza	100 Mearns Rd	Bowmanville	18-Jul-17				
East Side Mario's	101 Clarington Blvd	Bowmanville	28-Nov-16				
Eatery 77	77 King St East	Bowmanville	11-Aug-14				
Eggsmart	170 Liberty St South	Bowmanville	1-Jan-10				
Extreme Pita	2316 Highway 2	Bowmanville	1-Dec-16				
Fionn MacCool's	2350 Highway 2	Bowmanville	31-Jan-18				
Free Topping Pizza	210 King St East	Bowmanville	11-Jul-17				
Frosty John's	100 Mearns Rd	Bowmanville	14-Mar-16		Y	Y	
Great Wok Chinese	100 Mearns Rd	Bowmanville	20-Jul-17				
Halibut house Fish and Chips	2377 Highway 2	Bowmanville	15-Feb-17			Y	
Hanc's Fries	181 King St East	Bowmanville	16-Jan-18				
Harveys	170 Liberty St South	Bowmanville	13-Mar-18				
iGreek	196 King St East	Bowmanville	13-Jul-17				
JP's Pita Deli	170 Liberty St South	Bowmanville	1-Jan-10				
Juniors Handmade Sourdough Pizza	181 King St East	Bowmanville	16-Jan-18				

### Restaurants

RESTAURANTS	Addresses	Town	Last Insp.	C.Type	FAS	SPR	STP
Kelsey's	90 Clarington Blvd	Bowmanville	20-Jan-17		Y		
KFC	209 King St East	Bowmanville	10-May-16				
King's Key Pub and Eatery	89 King St East	Bowmanville	11-Aug-14				
Little Caesar's	243 King St. E	Bowmanville	1-Jan-09				
Loblaws	2375 Highway 2	Bowmanville	26-Jan-17		Y	Y	
MacDonalds (WalMart)	2320 Highway 2	Bowmanville	7-Feb-17				
Makimono	2378 Highway 2	Bowmanville	1-Dec-16				
Mary Brown's	380 Baseline Rd West	Bowmanville	24-May-17				
McDonalds	2387 Highway 2	Bowmanville	31-Jan-17		Y		
Mito Sushi	243 King St. E	Bowmanville	1-Jan-09		Y	Y	
Montana's BBQ and Bar	2340 Highway 2	Bowmanville	31-Jan-18		Y		
Mr. Sub	380 Baseline Rd West	Bowmanville	1-Jan-10				
Mucho Burrito	2316 Highway 2	Bowmanville	1-Dec-16		Y		
Olympia Restaurant	12 King St East	Bowmanville	16-Jan-18	C			
Pita Pit	21 King St East	Bowmanville	4-Apr-16				
Pizza Hut	215 King St East	Bowmanville	10-May-16				
Pizza Nova	2377 Highway 2	Bowmanville	15-Feb-17				
Pizza Pizza	570 Longworth Ave	Bowmanville	1-Jan-09				
Pizza Pizza	200 King St East	Bowmanville	11-Jul-17	C/NC			
Pizzaville	680 Longworth Ave	Bowmanville	11-Jul-17				
Popeyes Louisiana Kitchen	2334 Highway 2	Bowmanville	6-Jun-17				
Square Boy Pizza and Subs	133 Church St	Bowmanville	13-Apr-16		Y	Y	
Subway	170 Liberty St South	Bowmanville	1-Jan-10				
Subway	2379 Highway 2	Bowmanville	17-Feb-17				
Subway	210 King St East	Bowmanville	11-Jul-17				
Subway	680 Longworth Ave	Bowmanville	11-Jul-17				
Sunrise Griddle	39 Martin Rd	Bowmanville	5-Dec-17			Y	
Swiss Chalet	2310 Highway 2	Bowmanville	19-Jan-17				
Endivine Bar	73 King St East	Bowmanville	1-Jul-15		Y	Y	
Tetra Kitchen and Vines	570 Longworth Ave	Bowmanville	13-Sep-17		Y	Y	
That's My Spot	680 Longworth Ave	Bowmanville	1-Jan-14		Y	Y	
The Birch Bistro and Lounge	84 King St. W	Bowmanville	2-Nov-11				
The Toasted Walnut	50 King St East	Bowmanville	14-Jan-10				

### Restaurants

RESTAURANTS	Addresses	Town	Last Insp.	C.Type	FAS	SPR	STP
Three-Six Kitchen & Lounge	36 King St East	Bowmanville	11-Jun-18	NC			
Tim Hortons	350 Waverley Rd South	Bowmanville	6-Mar-18				
Village Inn	99 King St West	Bowmanville	8-Aug-17				
Wendy's	350 Waverley Rd South	Bowmanville	6-Mar-18				
Wild Wing	68 King St East	Bowmanville	27-Jun-17				
Wimpy's Diner	219 King St East	Bowmanville	26-Jul-18	NC			
Win Yeung Garden Chinese Restaurant	9 King St West	Bowmanville	1-Jan-15				
Ballers Sports Bar and Grill	1414 Highway 2	Courtice	1-Apr-16				
Barnaby's Deli	1405 Highway 2	Courtice	1-Apr-15				
Bistro 238	1413 Highway 2	Courtice	10-Aug-17				
Coffee Time	2727 Courtice Rd	Courtice	11-May-17				
Dairy Queen	1420 Highway 2	Courtice	1-Apr-15				
Fat Bastard Buritos Co.	1403 Highway 2	Courtice	1-Apr-15				
Fisherman's Fish & Chips	2727 Courtice Rd	Courtice	11-May-17				
Free Topping Pizza	1561 Highway 2	Courtice	3-Oct-17				
Papas Pizza	1656 Nash Road	Courtice	4-Jun-09				
Golden Pine Chinese Restaurant	2 Glenabbey Dr.	Courtice	1-Jan-11				
Goodfella's Pizza	2727 Courtice Rd	Courtice	11-May-17				
Little Caesar's	1414 Highway 2	Courtice	1-Jan-09				
Molly's Country Kitchen	2727 Courtice Rd	Courtice	11-May-17		Y		
ohSHAWARMA	1414 Highway 2	Courtice	1-Jan-15				
Pizza Nova	1420 Highway 2	Courtice	1-Jan-09				
Popeyes Louisiana Kitchen	1414 Highway 2	Courtice	1-Jan-16				
Shoeless Joe's	1419 Highway 2	Courtice	1-Mar-15		Y		
Stuttering John's Smokehouse	1540 Highway 2	Courtice	1-Apr-15				
Subway	2727 Courtice Rd	Courtice	11-May-17				
Subway	1403 Highway 2	Courtice	5-Sep-17				
Swiss Chalet	1427 Highway 2	Courtice	1-Mar-15	NC	Y	Y	
Thai HotSpot	1414 Highway 2	Courtice	1-Jun-15	NC		Y	
The Bittmore Tap & Grill	1656 Nash Rd	Courtice	23-May-17	NC	Y	Y	
The Courtyard	1437 Highway 2	Courtice	12-Sep-17	NC	Y		
Tim Hortons	1403 Highway 2	Courtice	5-Sep-17	NC			
Tim Hortons	1502 Highway 2	Courtice	5-Sep-17	NC			