

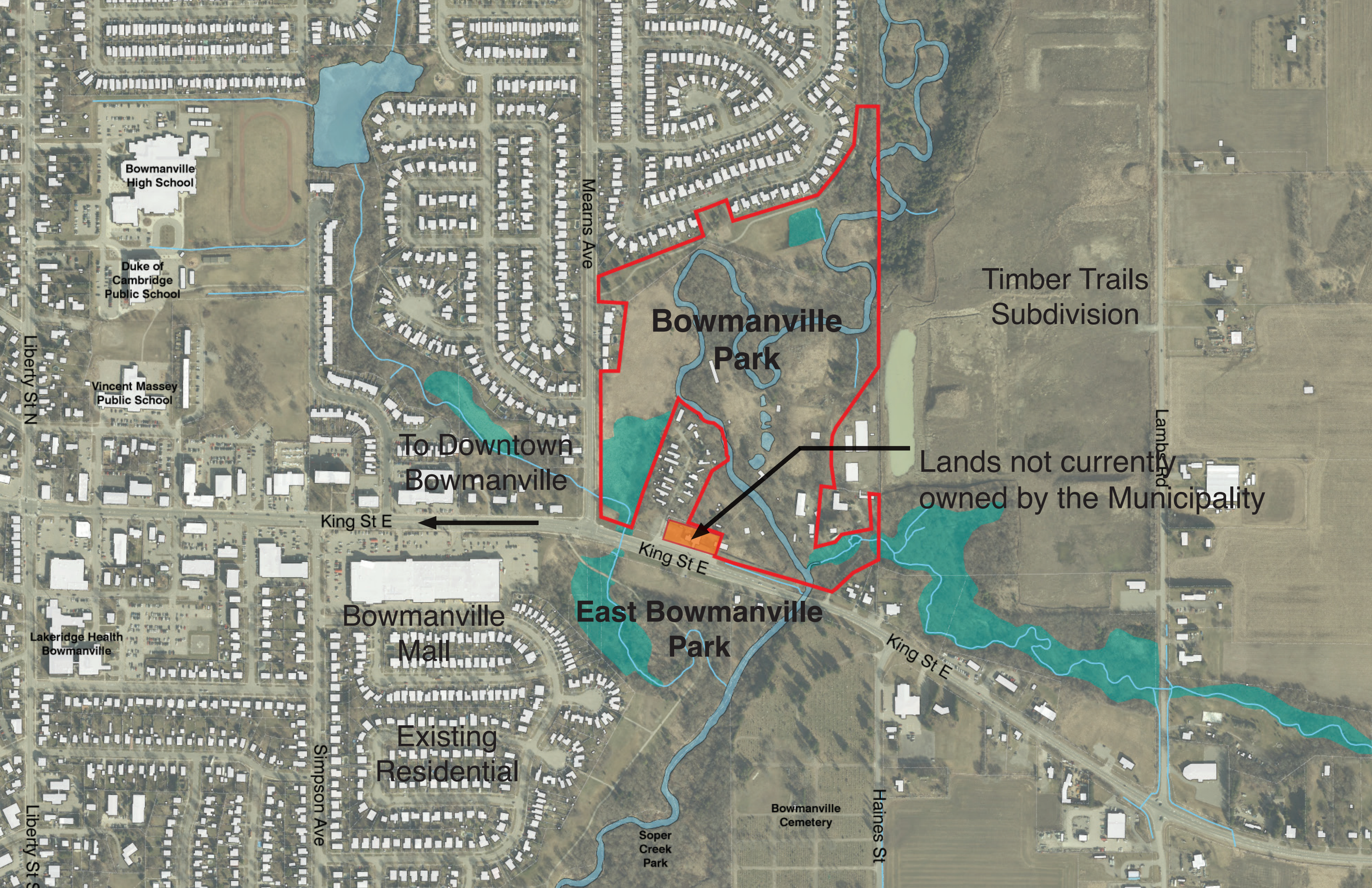


Bowmanville Zoo Lands Master Plan

David Leinster

9/16/2024

 **The Planning
Partnership**



Bowmanville High School

Duke of Cambridge Public School

Vincent Massey Public School

Bowmanville Park

Timber Trails Subdivision

To Downtown Bowmanville

Lands not currently owned by the Municipality

King St E

King St E

Bowmanville Mall

East Bowmanville Park

Existing Residential

Bowmanville Cemetery

Soper Creek Park

Liberty St N

Mearns Ave

Lamb Rd

Simpson Ave

Haines St

Liberty St S

Land dedication
2018

2022
September

2021
December
*Clarington & Valleys
Zoo partnership*

2023
February
*High-level
park concept*

2023
November
*Initial Concept
reviewed*

*Park Concept included as
part of the Parks Recreation
and Culture Master Plan*

2023
May



Initial Concept updated

**2024
February**

Concept Plan refined

**2024
May**

**Next Steps
(TBD)**

**2024
April**

In-person public workshop was & online survey launched



**2024
June**

Final Master Plan Report to Council





Legend

Community, Culture & Education

1. Visitor / Welcome Centre
2. Gathering / Event Space
3. Performance Amphitheatre
4. Commemorative Forest
5. Demonstration Garden

Recreational / Play Elements

6. Trails
7. Multi-use play field
8. Playground
9. Fitness Station

Landscape Typologies

10. Woodland
11. Dry Meadow
12. Wet Meadow

Park Amenities

- WC Washrooms
 P Parking



Site Elements

- 1 Play Elements
- 2 Washroom Building
- 3 Shade Structure / Canopy











Natural playgrounds



Washroom building with a shade canopy



Site Elements

-  Wayfinding / Interpretive Signage
-  Seating / Waste & Recycling Bins
-  Bicycle Parking
-  Stone Seating Ledges
-  Granular Walkways
-  Butterfly Gardens





Stone seating ledges



Granular walkway



Butterfly garden