

Parks, Recreation & Culture Master Plan

Council Presentation

October 28, 2024

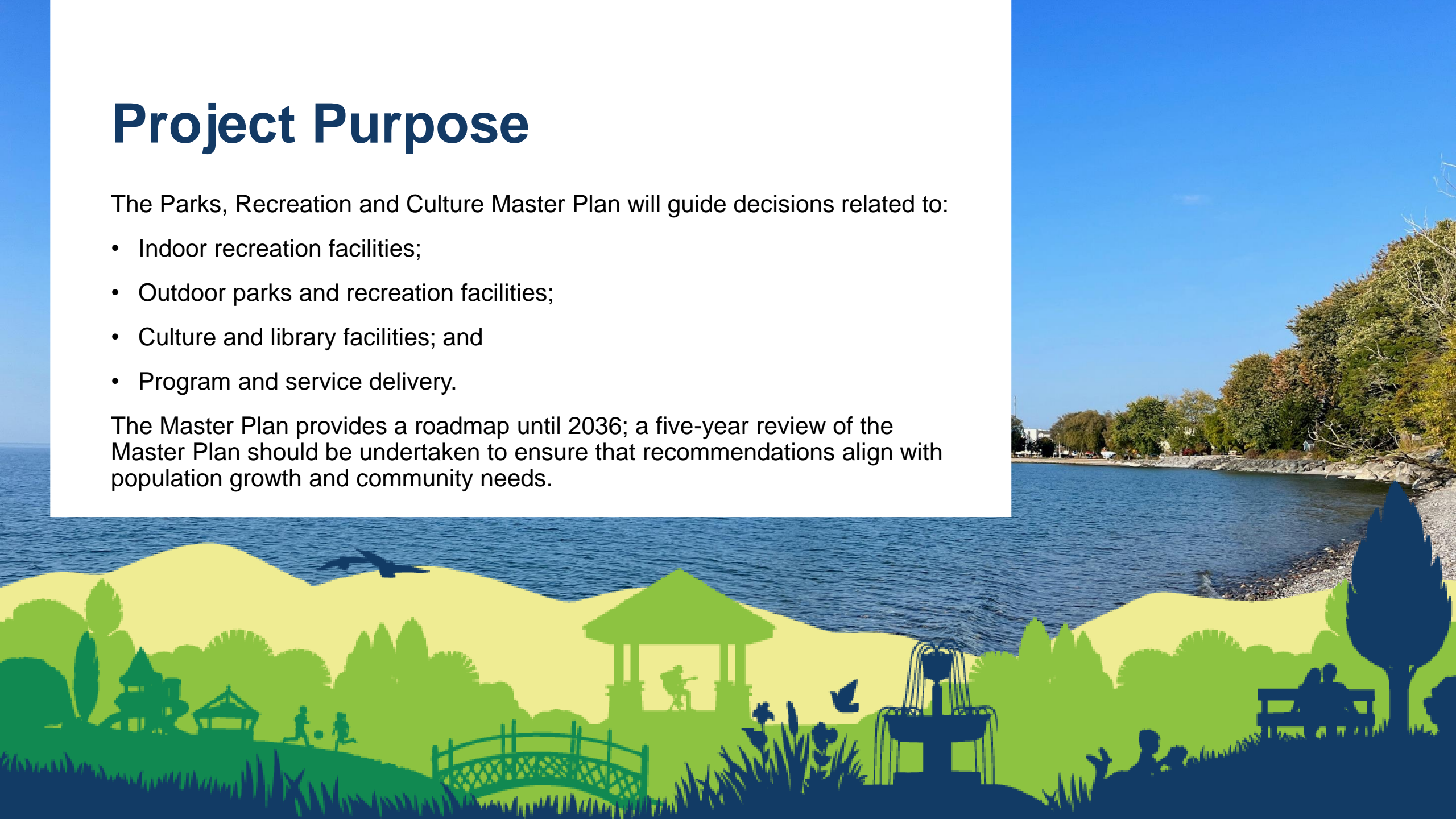


Project Purpose

The Parks, Recreation and Culture Master Plan will guide decisions related to:

- Indoor recreation facilities;
- Outdoor parks and recreation facilities;
- Culture and library facilities; and
- Program and service delivery.

The Master Plan provides a roadmap until 2036; a five-year review of the Master Plan should be undertaken to ensure that recommendations align with population growth and community needs.



Project Process



We are here



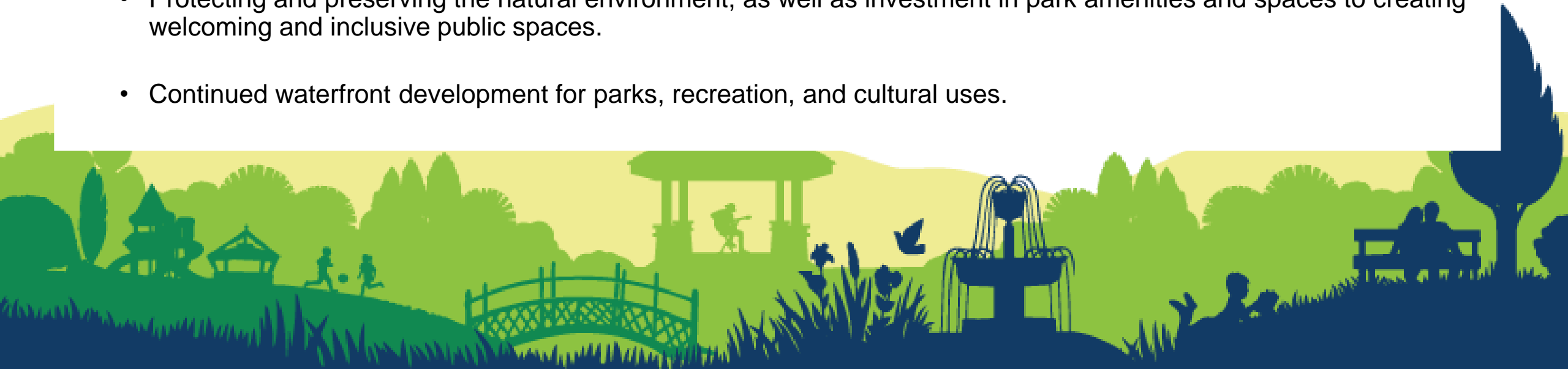
Draft Master Plan Feedback

Over 400 public feedback submissions were received online, in addition to written comments from the public, community organizations, school boards, Central Lake Ontario Conservation Authority, Indigenous Peoples, and the development community. Over two-thirds of online respondents supported the Draft Master Plan's recommendations. Written comments supported recommendations including:

- A need for more parkland and promotion of non-municipal parks in the rural area (e.g., Orono Crown Lands). There was support for locating schools next to major parks and for strategic park investment to renew aging infrastructure and planting native species.
- Constructing the South Bowmanville Recreation Centre, with specific mention of an indoor pool and need for programming.
- More sports facilities, particularly pickleball and a dedicated cricket field.
- Continued trail development to connect all areas of Clarington and to adjacent municipalities, using the hydro corridors along trails was suggest.
- Expanding library space, including support for a future branch in the north end of Bowmanville.

Draft Master Plan Feedback (continued)

- Greater investment and promotion of Clarington's arts and cultural opportunities (e.g., farmers markets, programming and performance space, and using existing community space). Protecting and preserving built and natural heritage features was also supported.
- Making greater use of existing sports fields, including building upon or exploring new partnerships with non-municipal landowners.
- Recognizing Clarington's Indigenous roots through public art, programming and special events, and planning for future parks and facilities.
- Protecting and preserving the natural environment, as well as investment in park amenities and spaces to creating welcoming and inclusive public spaces.
- Continued waterfront development for parks, recreation, and cultural uses.



Draft Master Plan Feedback (continued)

Less support was received including the following:

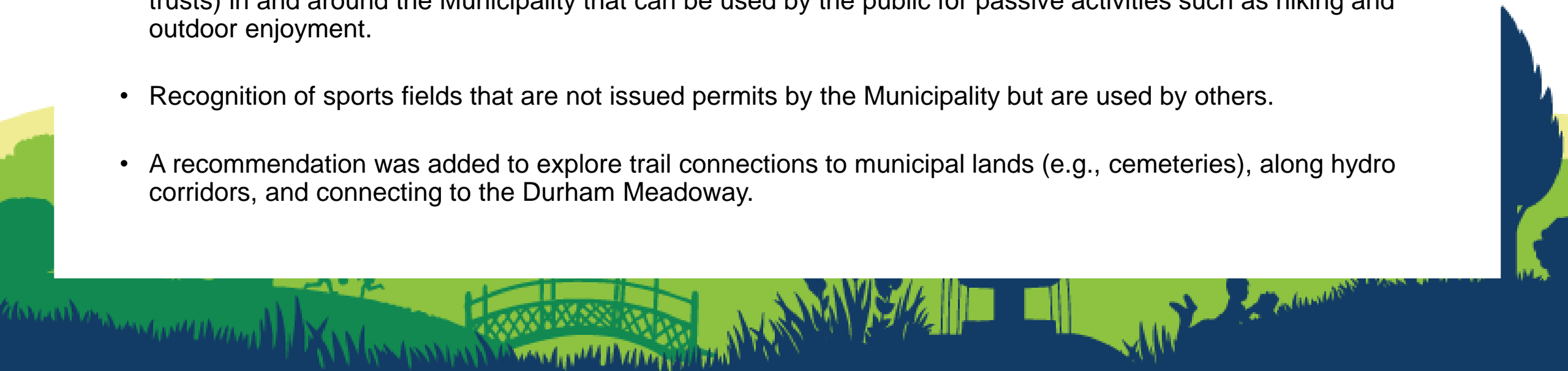
- Respondents expressed the desire for a twin pad arena in the short-term. The development of two new pads at the South Courtice Arena continues to be the recommended option, subject to confirming needs as part of a five-year update to the Master Plan.
- The development industry raised concerns regarding the recommended minimum size for Neighbourhood Parks and requested that planned parks within Secondary Plan Areas be maintained. No changes are made to the Neighbourhood Park size to recognize the need to accommodate a range of outdoor recreation facilities (including sports fields). Staff will need to determine the best way forward to implement the Master Plan's recommendations to address parkland requirements.
- Concerns were raised about the amount of investment required to implement the recommendations, although respondents generally recognized that there is a need to make investments to keep pace with population growth.



Finalizing the Master Plan

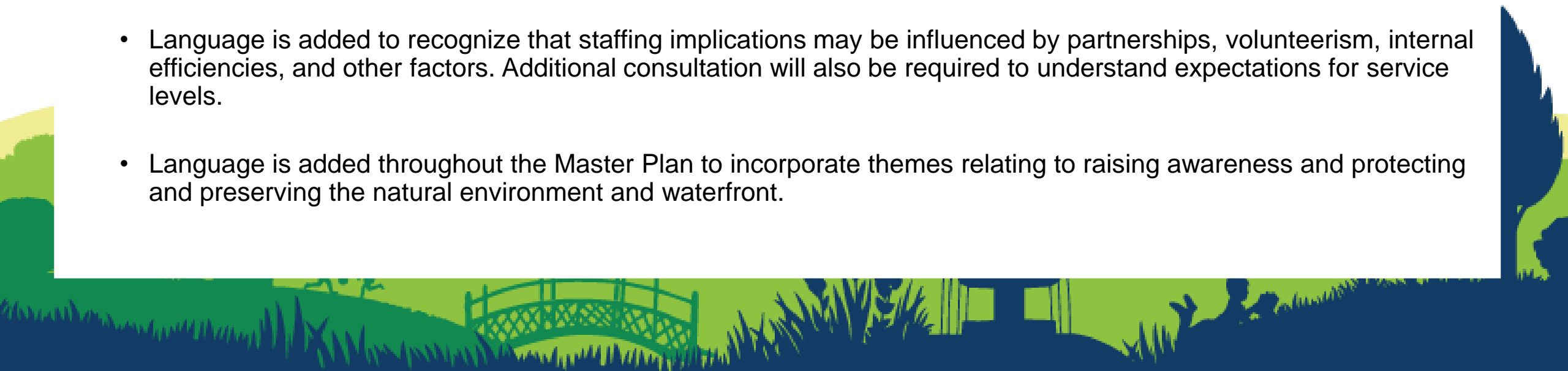
The following changes were made to finalize the Master Plan:

- The parkland hierarchy was revised to encourage the co-location of Municipal Wide Parks and Community Parks with schools and to recognize that indoor facilities may be located within larger parks if Council is satisfied that needs for outdoor recreation facilities and amenities are satisfied.
- Language is added to further recognize Indigenous Peoples and ensure that they are engaged in planning parks and facilities.
- References is added to recognize non-municipal parks and outdoor spaces (e.g., conservation areas and land trusts) in and around the Municipality that can be used by the public for passive activities such as hiking and outdoor enjoyment.
- Recognition of sports fields that are not issued permits by the Municipality but are used by others.
- A recommendation was added to explore trail connections to municipal lands (e.g., cemeteries), along hydro corridors, and connecting to the Durham Meadoway.



Finalizing the Master Plan (continued)

- The recommendation for modernizing the Visual Arts Centre was expanded to include exploring potential enhancements to the outdoor space to accommodate small scale events.
- The inventory of cultural facilities was revised to recognize additional cenotaphs and other providers such as churches.
- Revisions were made to permit multi-lining pickleball and tennis courts in locations that may have lower use to make efficient use of space such as in rural areas. Dedicated sport courts in urban areas continues to be recommended.
- Site evaluation criteria is added to provide guidance on addressing future library space needs.
- Language is added to recognize that staffing implications may be influenced by partnerships, volunteerism, internal efficiencies, and other factors. Additional consultation will also be required to understand expectations for service levels.
- Language is added throughout the Master Plan to incorporate themes relating to raising awareness and protecting and preserving the natural environment and waterfront.



Implementation

Implementation of recommendations are intended to be phased in towards 2036. Undertaking five-year reviews of the Master Plan will ensure that recommendations align with population growth and community needs.

By approving the Master Plan, Council is not bound to all recommendations. Staff will bring initiatives forward to be discussed and approved. Additional information will be provided at that time, as necessary.

Partnerships between the Municipality, CLMA, and others should be explored as part of implementing the Master Plan to share roles, responsibilities, maximize the use of space, and minimize service duplication.



Clarington

Thank You!