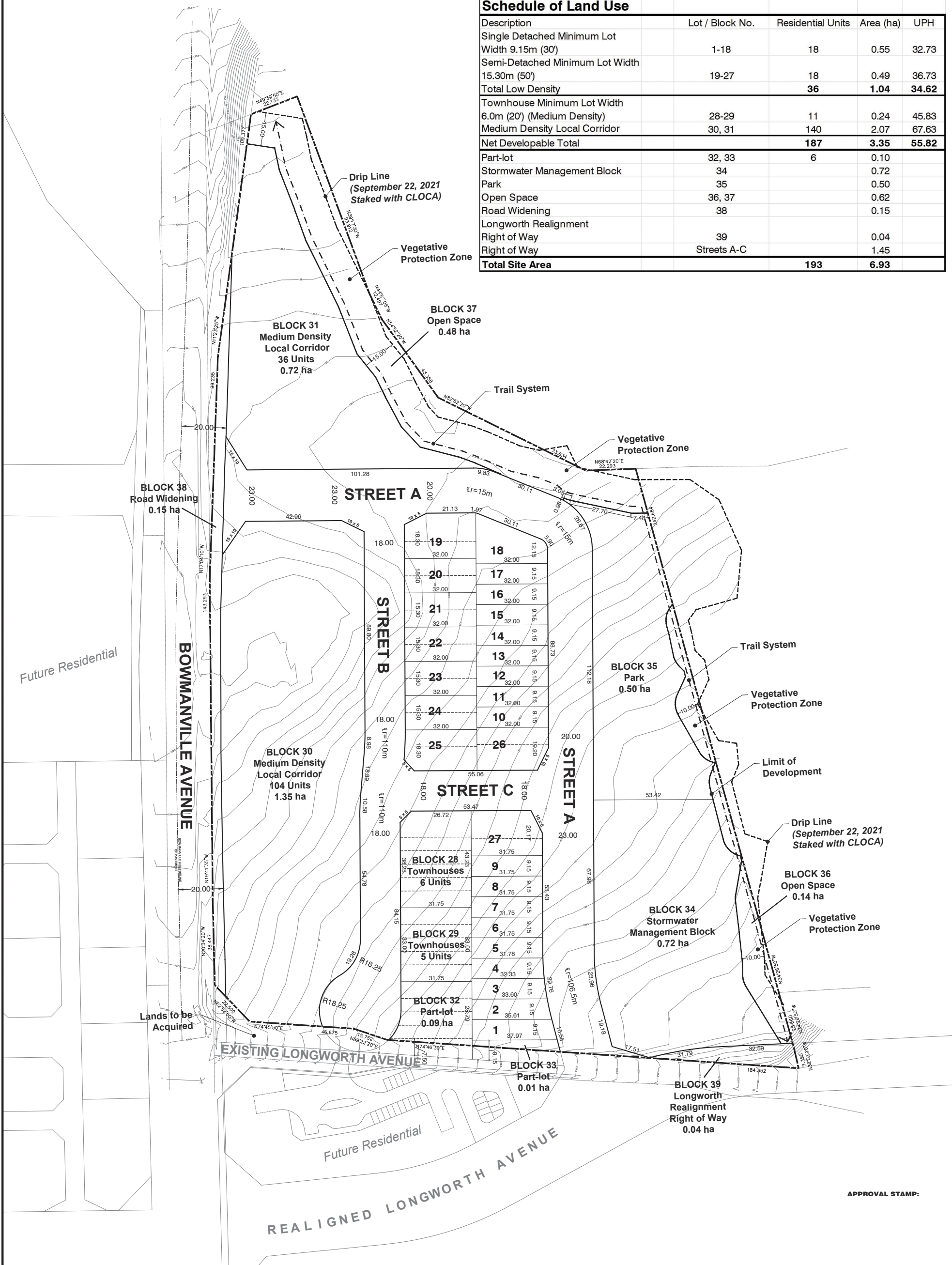


Schedule of Land Use

Description	Lot / Block No.	Residential Units	Area (ha)	UPH
Single Detached Minimum Lot Width 9.15m (30')	1-18	18	0.55	32.73
Semi-Detached Minimum Lot Width 15.30m (50')	19-27	18	0.49	36.73
Total Low Density		36	1.04	34.62
Townhouse Minimum Lot Width 6.0m (20') (Medium Density)	28-29	11	0.24	45.83
Medium Density Local Corridor	30, 31	140	2.07	67.63
Net Developable Total		187	3.35	55.82
Part-lot	32, 33	6	0.10	
Stormwater Management Block	34		0.72	
Park	35		0.50	
Open Space	36, 37		0.62	
Road Widening	38		0.15	
Longworth Realignment				
Right of Way	39		0.04	
Right of Way	Streets A-C		1.45	
Total Site Area		193	6.93	



APPROVAL STAMP:

TITLE:
DRAFT PLAN OF SUBDIVISION

LEGAL DESCRIPTION:
DRAFT PLAN OF SUBDIVISION
PART OF LOT 14
CONCESSION 2
GEOGRAPHIC TOWNSHIP OF DARLINGTON
REGIONAL MUNICIPALITY OF DURHAM

**TRIBUTE TERCOT
BROOKHILL 1 Inc.**



SURVEYOR'S CERTIFICATE:
I HEREBY CERTIFY THAT THE BOUNDARIES OF THE LANDS TO BE SUBDIVIDED AS SHOWN ON THIS PLAN AND THEIR RELATIONSHIP TO THE ADJACENT LANDS ARE ACCURATE AND CORRECTLY SHOWN IN ACCORDANCE WITH A PLAN OF SURVEY PREPARED BY SCHAEFFER DZALDOV BENNETT LTD.

OWNER'S CERTIFICATE:
I HEREBY AUTHORIZE THE BIGLIERI GROUP LTD. TO PREPARE AND SUBMIT THIS DRAFT PLAN OF SUBDIVISION TO THE MUNICIPALITY OF CLARINGTON

TRIBUTE TERCOT BROOKHILL 1 INC.

REQUIRED INFORMATION:
AS REQUIRED UNDER SECTION 51(17) OF THE PLANNING ACT R.S.O. 1990.

(a) SEE PLAN (g) SEE PLAN (m) MUNICIPAL SERVICES AVAILABLE
 (b) SEE PLAN (h) N/A (n) MUNICIPAL SERVICES AVAILABLE
 (c) SEE KEY MAP (i) SEE PLAN (o) MUNICIPAL SERVICES AVAILABLE
 (d) SEE SCHEDULE OF LAND USE (j) SEE PLAN (p) MUNICIPAL SERVICES AVAILABLE
 (e) SEE PLAN (k) SEE PLAN (q) SEE PLAN
 (f) SEE PLAN (l) N/A

REVISIONS

No.	Description	Date	Int.
3			
2			
1	Submission for Pre-Consultation	22/09/20	EC

PROJECT No.: 21744
DATE: September 22, 2022
SCALE: 1:750
DRAFTED BY: EC CHECKED BY: MP
DRAWING No.: **DP-01**

BIGLIERI GROUP

2472 Kingston Rd. Toronto
126 Catherine Street North, Hamilton
(416) 693-9155
thebiglierigroup.com